

CD99L2 Polyclonal Antibody

Purified Rabbit Polyclonal Antibody (Pab)

Catalog # AP55266

Product Information

Application	WB, IHC-P, IHC-F, IF, ICC, E
Primary Accession	Q8TCZ2
Reactivity	Human
Host	Rabbit
Clonality	Polyclonal
Calculated MW	27986
Physical State	Liquid
Immunogen	KLH conjugated synthetic peptide derived from human CD99L2
Epitope Specificity	81-187/262
Isotype	IgG
Purity	affinity purified by Protein A
Buffer	0.01M TBS (pH7.4) with 1% BSA, 0.02% Proclin300 and 50% Glycerol.
SUBCELLULAR LOCATION	Cell membrane. Cell junction.
SIMILARITY	Belongs to the CD99 family.
Post-translational modifications	O-glycosylated.
Important Note	This product as supplied is intended for research use only, not for use in human, therapeutic or diagnostic applications.
Background Descriptions	May function as a homophilic adhesion molecule. Functions in leukocyte-endothelial cell interactions during leukocyte extravasation, and in particular, at the diapedesis step. Does not seem to be involved in docking of leukocytes to the vessel wall or in lymphocyte diapedesis.

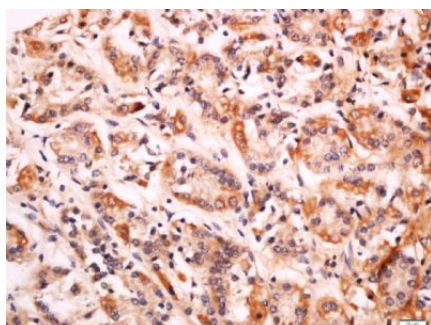
Additional Information

Gene ID	83692
Other Names	CD99 antigen-like protein 2, MIC2-like protein 1, CD99, CD99L2, MIC2L1
Target/Specificity	Expressed in brain, heart, lung, liver, spleen, kidney, stomach, small intestine, skeletal muscle, ovary, thymus, testis and uterus. Lower expression seen in thymus. Expressed in E18 uterus and placenta.
Dilution	WB=1:500-2000,IHC-P=1:100-500,IHC-F=1:100-500,ICC=1:100-500,IF=1:100-500,ELISA=1:5000-10000
Format	0.01M TBS(pH7.4) with 1% BSA, 0.09% (W/V) sodium azide and 50% Glyce
Storage	Store at -20 °C for one year. Avoid repeated freeze/thaw cycles. When reconstituted in sterile pH 7.4 0.01M PBS or diluent of antibody the antibody is stable for at least two weeks at 2-4 °C.

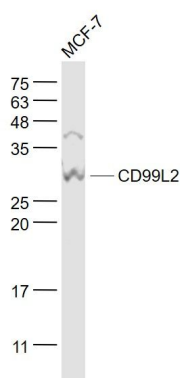
Protein Information

Name	CD99L2
Synonyms	MIC2L1
Function	Plays a role in a late step of leukocyte extravasation helping cells to overcome the endothelial basement membrane. Acts at the same site as, but independently of, PECAM1 (By similarity). Homophilic adhesion molecule, but these interactions may not be required for cell aggregation (By similarity).
Cellular Location	Cell membrane; Single-pass type I membrane protein; Extracellular side. Cell junction. Secreted
Tissue Location	Detected in cerebrospinal fluid (at protein level) (PubMed:25326458). Expressed in many tissues, with low expression in thymus.

Images



Tissue/cell: human gastric cancer; 4%
Paraformaldehyde-fixed and paraffin-embedded;
Antigen retrieval: citrate buffer (0.01M, pH 6.0), Boiling bathing for 15min; Block endogenous peroxidase by 3% Hydrogen peroxide for 30min; Blocking buffer (normal goat serum,C-0005) at 37°C for 20 min;
Incubation: Anti-CD99L2 Polyclonal Antibody, Unconjugated(AP55266) 1:200, overnight at 4°C, followed by conjugation to the secondary antibody(SP-0023) and DAB(C-0010) staining



Sample:
MCF-7(Human) Cell Lysate at 30 ug
Primary: Anti- CD99L2 (AP55266) at 1/1000 dilution
Secondary: IRDye800CW Goat Anti-Rabbit IgG at 1/20000 dilution
Predicted band size: 25 kD
Observed band size: 28 kD

Please note: All products are 'FOR RESEARCH USE ONLY. NOT FOR USE IN DIAGNOSTIC OR THERAPEUTIC PROCEDURES'.