

PCDHB10 Rabbit pAb

PCDHB10 Rabbit pAb

Catalog # AP55256

Product Information

Application	WB, IHC-P, IHC-F, IF
Primary Accession	Q9UN67
Reactivity	Human, Rat
Predicted	Mouse, Rabbit
Host	Rabbit
Clonality	Polyclonal
Calculated MW	87621
Physical State	Liquid
Immunogen	KLH conjugated synthetic peptide derived from human PCDHB10
Epitope Specificity	351-450/800
Purity	affinity purified by Protein A
Buffer	0.01M TBS (pH7.4) with 1% BSA, 0.02% Proclin300 and 50% Glycerol.
SUBCELLULAR LOCATION	Cell membrane.
SIMILARITY	Contains 6 cadherin domains.
Important Note	This product as supplied is intended for research use only, not for use in human, therapeutic or diagnostic applications.
Background Descriptions	Protocadherins are a large family of cadherin-like cell adhesion proteins that are involved in the establishment and maintenance of neuronal connections in the brain. There are three protocadherin gene clusters, designated a, b and g, all of which contain multiple tandemly-arranged genes. PCDHB10 (protocadherin b10), also known as PCHB10 or PCDH-b10, is an 800 amino acid protein that is one of 16 proteins in the protocadherin b cluster. Unlike the a and g gene clusters, whose genes are spliced to downstream constant-region exons during transcription, members of the b cluster (such as PCDHB10) do not use constant-region exons to produce mRNAs. As a result, each protocadherin b gene encodes the transmembrane, extracellular and short cytoplasmic domains of the protein. Localized to the cell membrane, PCDHB10 is a single-pass type I membrane protein that contains six cadherin domains.

Additional Information

Gene ID	56126
Other Names	Protocadherin beta-10, PCDH-beta-10, PCDHB10
Dilution	WB=1:500-2000,IHC-P=1:100-500,IHC-F=1:100-500,IF=1:100-500
Storage	Store at -20 °C for one year. Avoid repeated freeze/thaw cycles. When reconstituted in sterile pH 7.4 0.01M PBS or diluent of antibody the antibody is stable for at least two weeks at 2-4 °C.

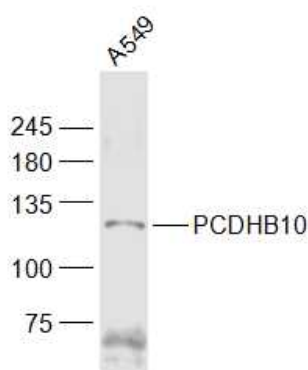
Protein Information

Name	PCDHB10
Function	Potential calcium-dependent cell-adhesion protein. May be involved in the establishment and maintenance of specific neuronal connections in the brain.
Cellular Location	Cell membrane; Single-pass type I membrane protein

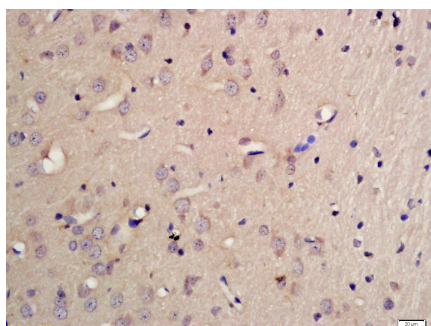
Background

Protocadherins are a large family of cadherin-like cell adhesion proteins that are involved in the establishment and maintenance of neuronal connections in the brain. There are three protocadherin gene clusters, designated a, b and g, all of which contain multiple tandemly-arranged genes. PCDHB10 (protocadherin b10), also known as PCHB10 or PCDH-b10, is an 800 amino acid protein that is one of 16 proteins in the protocadherin b cluster. Unlike the a and g gene clusters, whose genes are spliced to downstream constant-region exons during transcription, members of the b cluster (such as PCDHB10) do not use constant-region exons to produce mRNAs. As a result, each protocadherin b gene encodes the transmembrane, extracellular and short cytoplasmic domains of the protein. Localized to the cell membrane, PCDHB10 is a single-pass type I membrane protein that contains six cadherin domains.

Images



Sample:
A549(Human) Cell Lysate at 30 ug
Primary: Anti-PCDHB10 (AP55256) at 1/1000 dilution
Secondary: IRDye800CW Goat Anti-Rabbit IgG at 1/20000 dilution
Predicted band size: 84 kD
Observed band size: 112 kD



Tissue/cell: rat brain tissue; 4% Paraformaldehyde-fixed and paraffin-embedded;
Antigen retrieval: citrate buffer (0.01M, pH 6.0), Boiling bathing for 15min; Block endogenous peroxidase by 3% Hydrogen peroxide for 30min; Blocking buffer (normal goat serum,C-0005) at 37°C for 20 min;
Incubation: Anti-PCDHB10 Polyclonal Antibody, Unconjugated(AP55256) 1:200, overnight at 4°C, followed by conjugation to the secondary antibody(SP-0023) and DAB(C-0010) staining

Please note: All products are 'FOR RESEARCH USE ONLY. NOT FOR USE IN DIAGNOSTIC OR THERAPEUTIC PROCEDURES'.