

# KLF17 Antibody (C-term)

Affinity Purified Rabbit Polyclonal Antibody (Pab)

Catalog # AP5507b

## Product Information

---

<b>Application</b>	WB, FC, E
<b>Primary Accession</b>	<a href="#">Q5JT82</a>
<b>Other Accession</b>	<a href="#">NP_775755.3</a>
<b>Reactivity</b>	Human
<b>Host</b>	Rabbit
<b>Clonality</b>	Polyclonal
<b>Isotype</b>	Rabbit IgG
<b>Calculated MW</b>	42577
<b>Antigen Region</b>	243-271

## Additional Information

---

<b>Gene ID</b>	128209
<b>Other Names</b>	Krueppel-like factor 17, Zinc finger protein 393, KLF17, ZNF393
<b>Target/Specificity</b>	This KLF17 antibody is generated from rabbits immunized with a KLH conjugated synthetic peptide between 243-271 amino acids of human KLF17.
<b>Dilution</b>	WB~~1:1000 FC~~1:10~50 E~~Use at an assay dependent concentration.
<b>Format</b>	Purified polyclonal antibody supplied in PBS with 0.09% (W/V) sodium azide. This antibody is purified through a protein A column, followed by peptide affinity purification.
<b>Storage</b>	Maintain refrigerated at 2-8°C for up to 2 weeks. For long term storage store at -20°C in small aliquots to prevent freeze-thaw cycles.
<b>Precautions</b>	KLF17 Antibody (C-term) is for research use only and not for use in diagnostic or therapeutic procedures.

## Protein Information

---

<b>Name</b>	KLF17
<b>Synonyms</b>	ZNF393
<b>Function</b>	Transcription repressor that binds to the promoter of target genes and prevents their expression. Acts as a negative regulator of epithelial-mesenchymal transition and metastasis in breast cancer. Specifically binds the 5'-CACCC-3' sequence in the promoter of ID1, a key

metastasis regulator in breast cancer, and repress its expression. May be a germ cell-specific transcription factor that plays important roles in spermatid differentiation and oocyte development (By similarity).

#### Cellular Location

Nucleus.

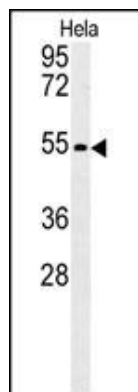
## Background

KLF17 binds G/C-rich sites via its zinc fingers and activates transcription from CACCC-box elements. It may be a germ cell-specific transcription factor that plays important roles in spermatid differentiation and oocyte development.

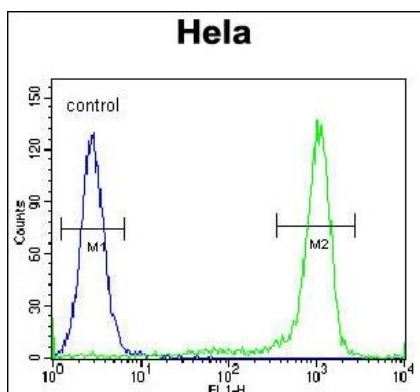
## References

Gumireddy, K., et al. Nat. Cell Biol. 11(11):1297-1304(2009) van Vliet, J., et al. Genomics 87(4):474-482(2006)  
Yan, W., et al. Mech. Dev. 118 (1-2), 233-239 (2002)

## Images



KLF17 Antibody (C-term) (Cat.#AP5507b) western blot analysis in HeLa cell line lysates (35ug/lane). This demonstrates the KLF17 antibody detected the KLF17 protein (arrow).



KLF17 Antibody (C-term) (Cat. #AP5507b) flow cytometric analysis of HeLa cells (right histogram) compared to a negative control cell (left histogram). FITC-conjugated goat-anti-rabbit secondary antibodies were used for the analysis.

## Citations

- [Reduced expression of Krüppel-like factor 17 is related to tumor growth and poor prognosis in lung adenocarcinoma.](#)

Please note: All products are 'FOR RESEARCH USE ONLY. NOT FOR USE IN DIAGNOSTIC OR THERAPEUTIC PROCEDURES'.