

KCNG1 Polyclonal Antibody

Purified Rabbit Polyclonal Antibody (Pab)

Catalog # AP54762

Product Information

Application	IHC-P, IHC-F, IF, ICC, E
Primary Accession	Q9UIX4
Reactivity	Rat, Pig, Dog, Bovine
Host	Rabbit
Clonality	Polyclonal
Calculated MW	57913
Physical State	Liquid
Immunogen	KLH conjugated synthetic peptide derived from human KCNG1
Epitope Specificity	401-500/513
Isotype	IgG
Purity	affinity purified by Protein A
Buffer	0.01M TBS (pH7.4) with 1% BSA, 0.02% Proclin300 and 50% Glycerol.
SUBCELLULAR LOCATION	Membrane; multi-pass membrane protein
SIMILARITY	Belongs to the potassium channel family. G (TC 1.A.1.2) subfamily. Kv6.1/KCNG1 sub-subfamily.
SUBUNIT	Heterotetramer of potassium channel proteins (By similarity).
Important Note	This product as supplied is intended for research use only, not for use in human, therapeutic or diagnostic applications.
Background Descriptions	Voltage-gated potassium (Kv) channels represent the most complex class of voltage-gated ion channels from both functional and structural standpoints. Their diverse functions include regulating neurotransmitter release, heart rate, insulin secretion, neuronal excitability, epithelial electrolyte transport, smooth muscle contraction, and cell volume. This gene encodes a member of the potassium channel, voltage-gated, subfamily G. This gene is abundantly expressed in skeletal muscle. Multiple alternatively spliced transcript variants have been found in normal and cancerous tissues. [provided by RefSeq, Jul 2008].

Additional Information

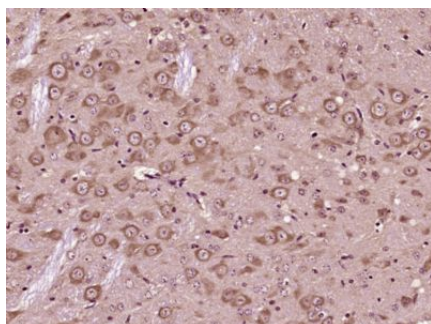
Gene ID	3755
Other Names	Potassium voltage-gated channel subfamily G member 1, Voltage-gated potassium channel subunit Kv6.1, kH2, KCNG1
Target/Specificity	Detected in brain and placenta, and at much lower levels in kidney and pancreas.
Dilution	IHC-P=1:100-500,IHC-F=1:100-500,ICC=1:100-500,IF=1:100-500,ELISA=1:5000-10000

Format	0.01M TBS(pH7.4) with 1% BSA, 0.09% (W/V) sodium azide and 50% Glyce
Storage	Store at -20 °C for one year. Avoid repeated freeze/thaw cycles. When reconstituted in sterile pH 7.4 0.01M PBS or diluent of antibody the antibody is stable for at least two weeks at 2-4 °C.

Protein Information

Name	KCNG1 (HGNC:6248)
Function	Regulatory alpha-subunit of the voltage-gated potassium (Kv) channel which, when coassembled with KCNB1 or KCNB2, can modulate their expression and their gating kinetics by acting on deactivation upon repolarization and inactivation during maintained depolarization (PubMed: 19074135). Potassium channel subunit that does not form functional channels by itself (PubMed: 19074135).
Cellular Location	Cell membrane {ECO:0000250 UniProtKB:Q14721}; Multi-pass membrane protein. Note=Colocalizes with KCNB1 at the plasma membrane. {ECO:0000250 UniProtKB:Q14721}
Tissue Location	Expressed in brain and placenta, and at much lower levels in kidney and pancreas (PubMed:9434767)

Images



Paraformaldehyde-fixed, paraffin embedded (Mouse brain); Antigen retrieval by boiling in sodium citrate buffer (pH6.0) for 15min; Block endogenous peroxidase by 3% hydrogen peroxide for 20 minutes; Blocking buffer (normal goat serum) at 37°C for 30min; Antibody incubation with (KCNG1) Polyclonal Antibody, Unconjugated (AP54762) at 1:400 overnight at 4°C, followed by operating according to SP Kit(Rabbit) (sp-0023) instructions and DAB staining.

Please note: All products are 'FOR RESEARCH USE ONLY. NOT FOR USE IN DIAGNOSTIC OR THERAPEUTIC PROCEDURES'.