

# AAMP Polyclonal Antibody

Purified Rabbit Polyclonal Antibody (Pab)

Catalog # AP54481

## Product Information

---

<b>Application</b>	WB, IHC-P, IHC-F, IF, ICC, E
<b>Primary Accession</b>	<a href="#">Q13685</a>
<b>Reactivity</b>	Rat, Pig, Dog, Bovine
<b>Host</b>	Rabbit
<b>Clonality</b>	Polyclonal
<b>Calculated MW</b>	46751
<b>Physical State</b>	Liquid
<b>Immunogen</b>	KLH conjugated synthetic peptide derived from human AAMP
<b>Epitope Specificity</b>	76-125/434
<b>Isotype</b>	IgG
<b>Purity</b>	affinity purified by Protein A
<b>Buffer</b>	0.01M TBS (pH7.4) with 1% BSA, 0.02% Proclin300 and 50% Glycerol.
<b>SUBCELLULAR LOCATION</b>	Cell Membrane and Cytoplasmic
<b>SIMILARITY</b>	Contains 8 WD repeats.
<b>Important Note</b>	This product as supplied is intended for research use only, not for use in human, therapeutic or diagnostic applications.
<b>Background Descriptions</b>	AAMP is a 434 amino acid immunoglobulin-like protein that contains 8 WD repeats. Expressed in endothelial cells, cytotrophoblasts and blood vessels, AAMP is thought to have a heparin-sensitive role in cell adhesion and cell migration. AAMP is strongly expressed in poorly differentiated colon adenocarcinoma cells, suggesting a role for AAMP in tumor progression.

## Additional Information

---

<b>Gene ID</b>	14
<b>Other Names</b>	Angio-associated migratory cell protein, AAMP
<b>Target/Specificity</b>	Expressed in metastatic melanoma, liver, skin, kidney, heart, lung, lymph node, skeletal muscle and brain, and also in A2058 melanoma cells and activated T-cells (at protein level). Expressed in blood vessels. Strongly expressed in endothelial cells, cytotrophoblasts, and poorly differentiated. colon adenocarcinoma cells found in lymphatics.
<b>Dilution</b>	WB=1:500-2000,IHC-P=1:100-500,IHC-F=1:100-500,ICC=1:100-500,IF=1:100-500,Flow-Cyt=1 $\mu$ g/Test,ELISA=1:5000-10000
<b>Format</b>	0.01M TBS(pH7.4) with 1% BSA, 0.09% (W/V) sodium azide and 50% Glyce
<b>Storage</b>	Store at -20 °C for one year. Avoid repeated freeze/thaw cycles. When reconstituted in sterile pH 7.4 0.01M PBS or diluent of antibody the antibody

is stable for at least two weeks at 2-4 °C.

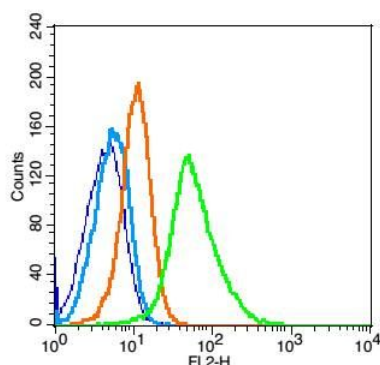
## Protein Information

---

<b>Name</b>	AAMP
<b>Function</b>	Plays a role in angiogenesis and cell migration. In smooth muscle cell migration, may act through the RhoA pathway.
<b>Cellular Location</b>	Cell membrane. Cytoplasm.
<b>Tissue Location</b>	Expressed in metastatic melanoma, liver, skin, kidney, heart, lung, lymph node, skeletal muscle and brain, and also in A2058 melanoma cells and activated T-cells (at protein level) Expressed in blood vessels. Strongly expressed in endothelial cells, cytotrophoblasts, and poorly differentiated. colon adenocarcinoma cells found in lymphatics.

## Images

---



Blank control(blue): Raji(fixed with 2% paraformaldehyde (10 min)).

Primary Antibody:Rabbit Anti-AAMP antibody(AP54481),  
Dilution: 1 µg in 100 µL 1X PBS containing 0.5% BSA;

Isotype Control Antibody: Rabbit IgG(orange) ,used  
under the same conditions );

Secondary Antibody: Goat anti-rabbit IgG-PE(white  
blue), Dilution: 1:200 in 1 X PBS containing 0.5% BSA.

Please note: All products are 'FOR RESEARCH USE ONLY. NOT FOR USE IN DIAGNOSTIC OR THERAPEUTIC PROCEDURES'.