

DEPDC1 Antibody (N-term)

Affinity Purified Rabbit Polyclonal Antibody (Pab)

Catalog # AP5428a

Product Information

Application	WB, IHC-P, E
Primary Accession	Q5TB30
Other Accession	NP_001107592.1 , NP_060249.2
Reactivity	Human
Host	Rabbit
Clonality	Polyclonal
Isotype	Rabbit IgG
Clone Names	RB26839
Calculated MW	92960
Antigen Region	10-38

Additional Information

Gene ID	55635
Other Names	DEP domain-containing protein 1A, DEPDC1, DEPDC1A
Target/Specificity	This DEPDC1 antibody is generated from rabbits immunized with a KLH conjugated synthetic peptide between 10-38 amino acids from the N-terminal region of human DEPDC1.
Dilution	WB~~1:1000 IHC-P~~1:100~500 E~~Use at an assay dependent concentration.
Format	Purified polyclonal antibody supplied in PBS with 0.09% (W/V) sodium azide. This antibody is purified through a protein A column, followed by peptide affinity purification.
Storage	Maintain refrigerated at 2-8°C for up to 2 weeks. For long term storage store at -20°C in small aliquots to prevent freeze-thaw cycles.
Precautions	DEPDC1 Antibody (N-term) is for research use only and not for use in diagnostic or therapeutic procedures.

Protein Information

Name	DEPDC1
Synonyms	DEPDC1A
Function	May be involved in transcriptional regulation as a transcriptional corepressor. The DEPDC1A-ZNF224 complex may play a critical role in bladder

carcinogenesis by repressing the transcription of the A20 gene, leading to transport of NF-KB protein into the nucleus, resulting in suppression of apoptosis of bladder cancer cells.

Cellular Location

Nucleus. Note=Colocalizes with ZNF224 at the nucleus

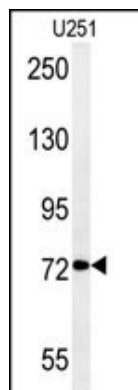
Tissue Location

Expressed in testis. Up-regulated in bladder cancer cells (at protein level).

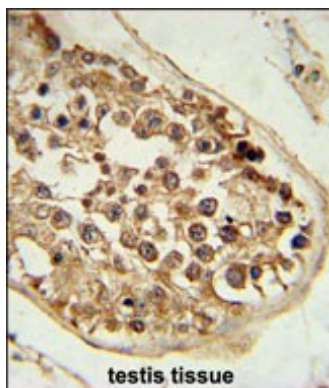
References

Kanehira, M., et al. Oncogene 26(44):6448-6455(2007)

Images



DEPDC1 Antibody (N-term)(Cat. #AP5428a) western blot analysis in U251 cell line lysates (35ug/lane).This demonstrates the DEPDC1 antibody detected the DEPDC1 protein (arrow).



DEPDC1 Antibody (N-term) (Cat. #AP5428a) immunohistochemistry analysis in formalin fixed and paraffin embedded human testis tissue followed by peroxidase conjugation of the secondary antibody and DAB staining. This data demonstrates the use of the DEPDC1 Antibody (N-term) for immunohistochemistry. Clinical relevance has not been evaluated.

Citations

- [DEPDC1 up-regulates RAS expression to inhibit autophagy in lung adenocarcinoma cells](#)

Please note: All products are 'FOR RESEARCH USE ONLY. NOT FOR USE IN DIAGNOSTIC OR THERAPEUTIC PROCEDURES'.