

Anti-CD35 Antibody

Catalog # AP54144

Product Information

Primary Accession	P17927
Other Accession	Q2VPA4
Reactivity	Human
Host	Mouse
Clonality	Monoclonal

Additional Information

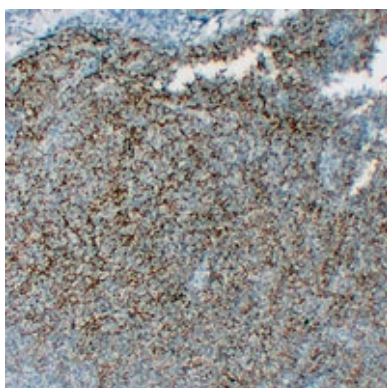
Other Names	CR1; C3BR; Complement receptor type 1; C3b/C4b receptor; CD35; CR1L; Complement component receptor 1-like protein; Complement C4b-binding protein CR-1-like protein
Target/Specificity	KLH-conjugated synthetic peptide encompassing a sequence within human CD35. The exact sequence is proprietary.
Format	Mouse IgG1. Liquid in PBS containing 50% glycerol, 0.2% BSA and 0.09% (W/V) sodium azide.
Storage	Store at -20 °C. Stable for 12 months from date of receipt

Protein Information

Background

Mouse monoclonal antibody to CD35

Images



Immunohistochemical analysis of CD35 staining in human follicular lymphoma formalin fixed paraffin embedded tissue section. The section was pre-treated using heat mediated antigen retrieval with sodium citrate buffer (pH 6.0). The section was then incubated with the antibody at room temperature and detected using an HRP conjugated compact polymer system. DAB was used as the chromogen. The section was then counterstained with haematoxylin and mounted with DPX.

Please note: All products are 'FOR RESEARCH USE ONLY. NOT FOR USE IN DIAGNOSTIC OR THERAPEUTIC PROCEDURES'.