

# Anti-Contactin 4 Antibody

Catalog # AP54099

## Product Information

---

<b>Application</b>	WB, IF
<b>Primary Accession</b>	<a href="#">Q8I WV2</a>
<b>Reactivity</b>	Human, Mouse, Rat
<b>Host</b>	Rabbit
<b>Clonality</b>	Polyclonal
<b>Calculated MW</b>	113454

## Additional Information

---

<b>Gene ID</b>	152330
<b>Other Names</b>	Contactin-4; Brain-derived immunoglobulin superfamily protein 2; BIG-2
<b>Target/Specificity</b>	KLH-conjugated synthetic peptide encompassing a sequence within the center region of human Contactin 4. The exact sequence is proprietary.
<b>Dilution</b>	WB~~1/500 - 1/1000 IF~~1/50 - 1/200
<b>Format</b>	Liquid in 0.42% Potassium phosphate, 0.87% Sodium chloride, pH 7.3, 30% glycerol, and 0.09% (W/V) sodium azide.
<b>Storage</b>	Store at -20 °C.Stable for 12 months from date of receipt

## Protein Information

---

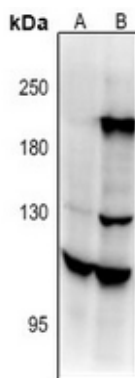
<b>Name</b>	CNTN4
<b>Function</b>	Contactins mediate cell surface interactions during nervous system development. Has some neurite outgrowth-promoting activity. May be involved in synaptogenesis.
<b>Cellular Location</b>	Cell membrane; Lipid-anchor, GPI-anchor. Secreted
<b>Tissue Location</b>	Mainly expressed in brain. Highly expressed in cerebellum and weakly expressed in corpus callosum, caudate nucleus, amygdala and spinal cord. Also expressed in testis, pancreas, thyroid, uterus, small intestine and kidney. Not expressed in skeletal muscle Isoform 2 is weakly expressed in cerebral cortex

## Background

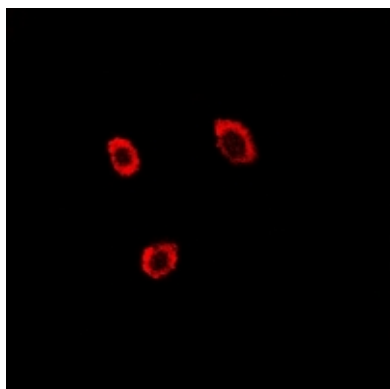
---

Rabbit polyclonal antibody to Contactin 4

## Images



Western blot analysis of Contactin 4 expression in mouse brain (A), rat brain (B) whole cell lysates.



Immunofluorescent analysis of Contactin 4 staining in A549 cells. Formalin-fixed cells were permeabilized with 0.1% Triton X-100 in TBS for 5-10 minutes and blocked with 3% BSA-PBS for 30 minutes at room temperature. Cells were probed with the primary antibody in 3% BSA-PBS and incubated overnight at 4 °C in a humidified chamber. Cells were washed with PBST and incubated with a Alexa Fluor 594-conjugated secondary antibody (red) in PBS at room temperature in the dark.

Please note: All products are 'FOR RESEARCH USE ONLY. NOT FOR USE IN DIAGNOSTIC OR THERAPEUTIC PROCEDURES'.