

Anti-pro-BMP8 Antibody

Catalog # AP54086

Product Information

Application	WB
Primary Accession	P34820
Other Accession	Q7Z5Y6
Reactivity	Human
Host	Rabbit
Clonality	Polyclonal
Calculated MW	44768

Additional Information

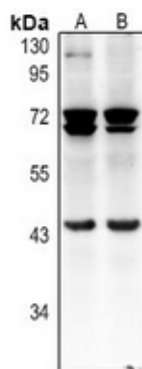
Gene ID	656
Other Names	BMP8B; BMP8; Bone morphogenetic protein 8B; BMP-8; BMP-8B; Osteogenic protein 2; OP-2; BMP8A; Bone morphogenetic protein 8A; BMP-8A
Target/Specificity	KLH-conjugated synthetic peptide encompassing a sequence within the center region of human pro-BMP8. The exact sequence is proprietary.
Dilution	WB~~1/500 - 1/1000
Format	Liquid in 0.42% Potassium phosphate, 0.87% Sodium chloride, pH 7.3, 30% glycerol, and 0.09% (W/V) sodium azide.
Storage	Store at -20 °C.Stable for 12 months from date of receipt

Protein Information

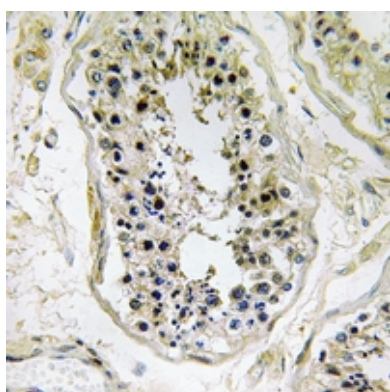
Name	BMP8B
Synonyms	BMP8
Function	Induces cartilage and bone formation. May be the osteoinductive factor responsible for the phenomenon of epithelial osteogenesis. Plays a role in calcium regulation and bone homeostasis (By similarity).
Cellular Location	Secreted.

Background

Rabbit polyclonal antibody to pro-BMP8



Western blot analysis of pro-BMP8 expression in HCT116 (A), HeLa (B) whole cell lysates.



Immunohistochemical analysis of pro-BMP8 staining in human testis formalin fixed paraffin embedded tissue section. The section was pre-treated using heat mediated antigen retrieval with sodium citrate buffer (pH 6.0). The section was then incubated with the antibody at room temperature and detected using an HRP conjugated compact polymer system. DAB was used as the chromogen. The section was then counterstained with haematoxylin and mounted with DPX.

Please note: All products are 'FOR RESEARCH USE ONLY. NOT FOR USE IN DIAGNOSTIC OR THERAPEUTIC PROCEDURES'.