

Anti-MCH Receptor 1 Antibody

Catalog # AP54085

Product Information

Application	WB, IF
Primary Accession	Q969V1
Reactivity	Human, Mouse, Rat
Host	Rabbit
Clonality	Polyclonal
Calculated MW	38849

Additional Information

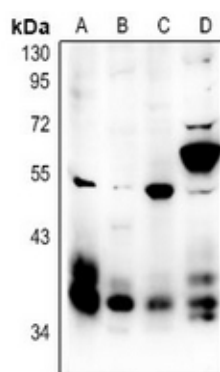
Gene ID	84539
Other Names	GPR145; SLT; Melanin-concentrating hormone receptor 2; MCH receptor 2; MCH-R2; MCHR-2; G-protein coupled receptor 145; GPRv17; MCH-2R; MCH2; MCH2R
Target/Specificity	KLH-conjugated synthetic peptide encompassing a sequence within the C-term region of human MCH Receptor 1. The exact sequence is proprietary.
Dilution	WB~~1/500 - 1/1000 IF~~1/50 - 1/200
Format	Liquid in 0.42% Potassium phosphate, 0.87% Sodium chloride, pH 7.3, 30% glycerol, and 0.09% (W/V) sodium azide.
Storage	Store at -20 °C.Stable for 12 months from date of receipt

Protein Information

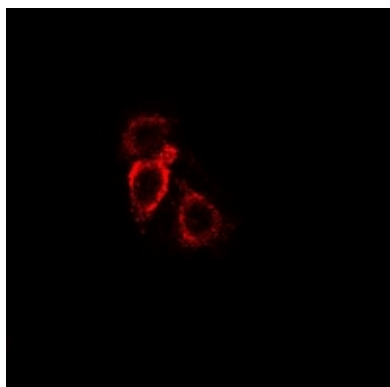
Name	MCHR2
Synonyms	GPR145, SLT
Function	Receptor for melanin-concentrating hormone, coupled to G proteins that activate phosphoinositide hydrolysis.
Cellular Location	Cell membrane; Multi-pass membrane protein.
Tissue Location	Specifically expressed in the brain, with highest levels in cerebral cortex, hippocampus and amygdala. No expression detected in the cerebellum, thalamus or hypothalamus

Background

Images



Western blot analysis of MCH Receptor 1 expression in rat testis (A), BV2 (B), LOVO (C), HCT116 (D) whole cell lysates.



Immunofluorescent analysis of MCH Receptor 1 staining in LOVO cells. Formalin-fixed cells were permeabilized with 0.1% Triton X-100 in TBS for 5-10 minutes and blocked with 3% BSA-PBS for 30 minutes at room temperature. Cells were probed with the primary antibody in 3% BSA-PBS and incubated overnight at 4 °C in a humidified chamber. Cells were washed with PBST and incubated with a Alexa Fluor 594-conjugated secondary antibody (red) in PBS at room temperature in the dark.

Please note: All products are 'FOR RESEARCH USE ONLY. NOT FOR USE IN DIAGNOSTIC OR THERAPEUTIC PROCEDURES'.