

Anti-Placental lactogen Antibody

Catalog # AP53997

Product Information

Application	WB
Primary Accession	P0DML2
Other Accession	P0DML3 , Q14406
Reactivity	Human
Host	Rabbit
Clonality	Polyclonal
Calculated MW	25020

Additional Information

Gene ID	1442
Other Names	Chorionic somatomammotropin hormone; Choriomammotropin; Lactogen; Placental lactogen; PL; CSHP1; CSL; Chorionic somatomammotropin hormone-like 1; Chorionic somatomammotropin-like; Lactogen-like
Target/Specificity	KLH-conjugated synthetic peptide encompassing a sequence within the center region of human Placental lactogen. The exact sequence is proprietary.
Dilution	WB~~1/500 - 1/1000
Format	Liquid in 0.42% Potassium phosphate, 0.87% Sodium chloride, pH 7.3, 30% glycerol, and 0.09% (W/V) sodium azide.
Storage	Store at -20 °C.Stable for 12 months from date of receipt

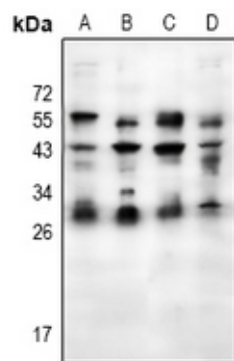
Protein Information

Name	CSH1
Function	Produced only during pregnancy and is involved in stimulating lactation, fetal growth and metabolism. Does not interact with GHR but only activates PRLR through zinc-induced dimerization.
Cellular Location	Secreted.

Background

Rabbit polyclonal antibody to Placental lactogen

Images



Western blot analysis of Placental lactogen expression in HeLa (A), A2780 (B), MCF7 (C), U87MG (D) whole cell lysates.

Please note: All products are 'FOR RESEARCH USE ONLY. NOT FOR USE IN DIAGNOSTIC OR THERAPEUTIC PROCEDURES'.