

Anti-Chromogranin B Antibody

Catalog # AP53944

Product Information

Application	WB
Primary Accession	P05060
Reactivity	Human, Mouse, Rat
Host	Rabbit
Clonality	Polyclonal
Calculated MW	78276

Additional Information

Gene ID	1114
Other Names	SCG1; Secretogranin-1; Chromogranin-B; CgB; Secretogranin I; SgI
Target/Specificity	KLH-conjugated synthetic peptide encompassing a sequence within the N-term region of human Chromogranin B. The exact sequence is proprietary.
Dilution	WB~~1/500 - 1/1000
Format	Liquid in 0.42% Potassium phosphate, 0.87% Sodium chloride, pH 7.3, 30% glycerol, and 0.09% (W/V) sodium azide.
Storage	Store at -20 °C.Stable for 12 months from date of receipt

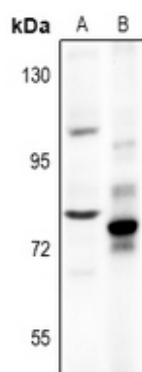
Protein Information

Name	CHGB
Synonyms	SCG1
Function	Secretogranin-1 is a neuroendocrine secretory granule protein, which may be the precursor for other biologically active peptides.
Cellular Location	Secreted. Note=Neuroendocrine and endocrine secretory granules
Tissue Location	Detected in cerebrospinal fluid and urine (at protein level) (PubMed:25326458, PubMed:37453717). Expressed in the adrenal medulla, and in pheochromocytoma. Not expressed in liver

Background

Rabbit polyclonal antibody to Chromogranin B

Images



Western blot analysis of Chromogranin B expression in HCT116 (A), PC12 (B) whole cell lysates.

Please note: All products are 'FOR RESEARCH USE ONLY. NOT FOR USE IN DIAGNOSTIC OR THERAPEUTIC PROCEDURES'.