

Anti-BEGAIN Antibody

Catalog # AP53914

Product Information

| | |
|--------------------------|------------------------|
| Application | WB, IF |
| Primary Accession | Q9BUH8 |
| Reactivity | Human |
| Host | Rabbit |
| Clonality | Polyclonal |
| Calculated MW | 64803 |

Additional Information

| | |
|---------------------------|---|
| Gene ID | 57596 |
| Other Names | KIAA1446; Brain-enriched guanylate kinase-associated protein |
| Target/Specificity | KLH-conjugated synthetic peptide encompassing a sequence within the C-term region of human BEGAIN. The exact sequence is proprietary. |
| Dilution | WB~~1/500 - 1/1000 IF~~1/50 - 1/200 |
| Format | Liquid in 0.42% Potassium phosphate, 0.87% Sodium chloride, pH 7.3, 30% glycerol, and 0.09% (W/V) sodium azide. |
| Storage | Store at -20 °C.Stable for 12 months from date of receipt |

Protein Information

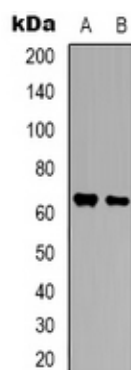
| | |
|--------------------------|--|
| Name | BEGAIN |
| Synonyms | KIAA1446 |
| Function | May sustain the structure of the postsynaptic density (PSD). |
| Cellular Location | Cytoplasm. Membrane; Peripheral membrane protein |

Background

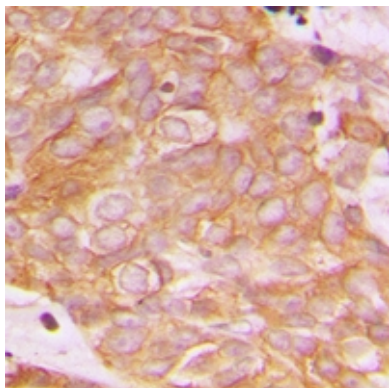
Rabbit polyclonal antibody to BEGAIN

Images

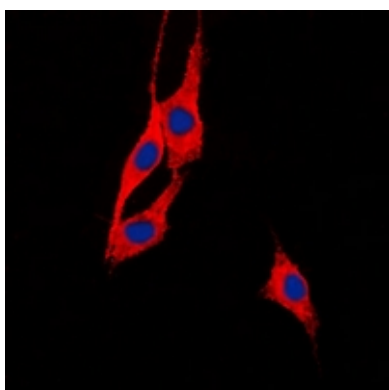
Western blot analysis of BEGAIN expression in Hela (A),



SHSY5Y (B) whole cell lysates.



Immunohistochemical analysis of BEGAIN staining in human breast cancer formalin fixed paraffin embedded tissue section. The section was pre-treated using heat mediated antigen retrieval with sodium citrate buffer (pH 6.0). The section was then incubated with the antibody at room temperature and detected using an HRP conjugated compact polymer system. DAB was used as the chromogen. The section was then counterstained with haematoxylin and mounted with DPX.



Immunofluorescent analysis of BEGAIN staining in Hela cells. Formalin-fixed cells were permeabilized with 0.1% Triton X-100 in TBS for 5-10 minutes and blocked with 3% BSA-PBS for 30 minutes at room temperature. Cells were probed with the primary antibody in 3% BSA-PBS and incubated overnight at 4 °C in a humidified chamber. Cells were washed with PBST and incubated with a DyLight 594-conjugated secondary antibody (red) in PBS at room temperature in the dark. DAPI was used to stain the cell nuclei (blue).

Please note: All products are 'FOR RESEARCH USE ONLY. NOT FOR USE IN DIAGNOSTIC OR THERAPEUTIC PROCEDURES'.