

# Anti-Sugen Kinase 269 Antibody

Catalog # AP53906

## Product Information

---

Application	WB
Primary Accession	<a href="#">Q9H792</a>
Reactivity	Human, Mouse
Host	Rabbit
Clonality	Polyclonal
Calculated MW	193106

## Additional Information

---

Gene ID	79834
Other Names	KIAA2002; Pseudopodium-enriched atypical kinase 1; Sugén kinase 269; Tyrosine-protein kinase SgK269
Target/Specificity	KLH-conjugated synthetic peptide encompassing a sequence within the N-term region of human Sugén Kinase 269. The exact sequence is proprietary.
Dilution	WB~~1/500 - 1/1000
Format	Liquid in 0.42% Potassium phosphate, 0.87% Sodium chloride, pH 7.3, 30% glycerol, and 0.09% (W/V) sodium azide.
Storage	Store at -20 °C.Stable for 12 months from date of receipt

## Protein Information

---

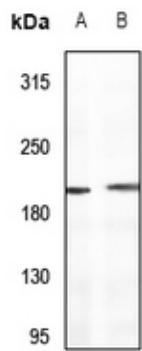
Name	PEAK1
Synonyms	KIAA2002
Function	Probable catalytically inactive kinase. Scaffolding protein that regulates the cytoskeleton to control cell spreading and migration by modulating focal adhesion dynamics (PubMed: <a href="#">20534451</a> , PubMed: <a href="#">23105102</a> , PubMed: <a href="#">35687021</a> ). Acts as a scaffold for mediating EGFR signaling (PubMed: <a href="#">23846654</a> ).
Cellular Location	Cytoplasm, cytoskeleton. Cell junction, focal adhesion Note=Colocalizes with F-actin in serum-rich medium (PubMed:20534451) Actin colocalization is reduced during serum starvation (PubMed:20534451).

## Background

---

Images

---



Western blot analysis of Sugen Kinase 269 expression in HEK293T (A), LO2 (B) whole cell lysates.

Please note: All products are 'FOR RESEARCH USE ONLY. NOT FOR USE IN DIAGNOSTIC OR THERAPEUTIC PROCEDURES'.