

# Anti-TCF4/12 Antibody

Catalog # AP53876

## Product Information

---

Application	WB
Primary Accession	<a href="#">P15884</a>
Other Accession	<a href="#">Q99081</a>
Reactivity	Human, Mouse, Rat
Host	Rabbit
Clonality	Polyclonal
Calculated MW	71308

## Additional Information

---

Gene ID	6925
Other Names	TCF4; BHLHB19; ITF2; SEF2; Transcription factor 4; TCF-4; Class B basic helix-loop-helix protein 19; bHLHb19; Immunoglobulin transcription factor 2; ITF-2; SL3-3 enhancer factor 2; SEF-2; TCF12; BHLHB20; HEB; HTF4; Transcription factor 12; TCF-12; Class B basic helix-loop-helix protein 20; bHLHb20; DNA-binding protein HTF4; E-box-binding protein; Transcription factor HTF-4
Target/Specificity	KLH-conjugated synthetic peptide encompassing a sequence within the C-term region of human TCF4/12. The exact sequence is proprietary.
Dilution	WB~~1/500 - 1/1000
Format	Liquid in 0.42% Potassium phosphate, 0.87% Sodium chloride, pH 7.3, 30% glycerol, and 0.09% (W/V) sodium azide.
Storage	Store at -20 °C.Stable for 12 months from date of receipt

## Protein Information

---

Name	TCF4
Synonyms	BHLHB19, ITF2, SEF2
Function	Transcription factor that binds to the immunoglobulin enhancer Mu-E5/KE5-motif. Involved in the initiation of neuronal differentiation. Activates transcription by binding to the E box (5'- CANNTG-3'). Binds to the E-box present in the somatostatin receptor 2 initiator element (SSTR2-INR) to activate transcription (By similarity). Preferentially binds to either 5'-ACANNTGT-3' or 5'- CCANNTGG-3'.
Cellular Location	Nucleus {ECO:0000255   PROSITE-ProRule:PRU00981,

## Tissue Location

Expressed in adult heart, brain, placenta, skeletal muscle and to a lesser extent in the lung. In developing embryonic tissues, expression mostly occurs in the brain

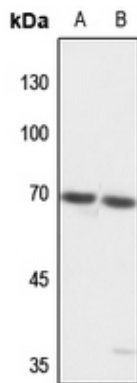
## Background

---

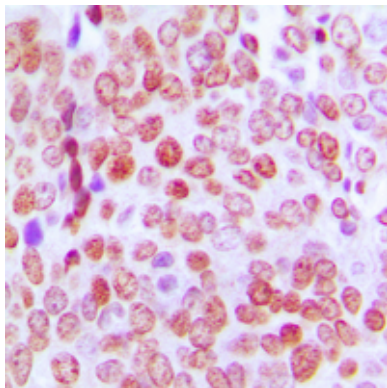
Rabbit polyclonal antibody to TCF4/12

## Images

---



Western blot analysis of TCF4/12 expression in H446 (A), mouse liver (B) whole cell lysates.



Immunohistochemical analysis of TCF4/12 staining in human prostate cancer formalin fixed paraffin embedded tissue section. The section was pre-treated using heat mediated antigen retrieval with sodium citrate buffer (pH 6.0). The section was then incubated with the antibody at room temperature and detected using an HRP conjugated compact polymer system. DAB was used as the chromogen. The section was then counterstained with haematoxylin and mounted with DPX.

Please note: All products are 'FOR RESEARCH USE ONLY. NOT FOR USE IN DIAGNOSTIC OR THERAPEUTIC PROCEDURES'.