

# Anti-CD92 Antibody

Catalog # AP53871

## Product Information

---

Application	WB
Primary Accession	<a href="#">Q8WWI5</a>
Reactivity	Human, Mouse, Rat
Host	Rabbit
Clonality	Polyclonal
Calculated MW	73302

## Additional Information

---

Gene ID	23446
Other Names	CD92; CDW92; CTL1; Choline transporter-like protein 1; CDw92; Solute carrier family 44 member 1; CD92
Target/Specificity	KLH-conjugated synthetic peptide encompassing a sequence within the center region of human CD92. The exact sequence is proprietary.
Dilution	WB~~1/500 - 1/1000
Format	Liquid in 0.42% Potassium phosphate, 0.87% Sodium chloride, pH 7.3, 30% glycerol, and 0.09% (W/V) sodium azide.
Storage	Store at -20 °C.Stable for 12 months from date of receipt

## Protein Information

---

Name	SLC44A1 ( <a href="#">HGNC:18798</a> )
Synonyms	CD92, CDW92, CTL1
Function	Choline/H <sup>+</sup> antiporter (PubMed: <a href="#">19357133</a> , PubMed: <a href="#">23651124</a> , PubMed: <a href="#">31855247</a> , PubMed: <a href="#">33789160</a> ). Also acts as a high-affinity ethanolamine/H <sup>+</sup> antiporter, regulating the supply of extracellular ethanolamine (Etn) for the CDP-Etn pathway, redistribute intracellular Etn and balance the CDP-Cho and CDP-Etn arms of the Kennedy pathway (PubMed: <a href="#">33789160</a> ). Involved in membrane synthesis and myelin production (PubMed: <a href="#">31855247</a> ).
Cellular Location	Cell membrane; Multi-pass membrane protein. Mitochondrion outer membrane; Multi-pass membrane protein
Tissue Location	Expressed in various cells of the hematopoietic system.

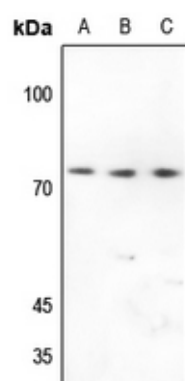
## Background

---

Rabbit polyclonal antibody to CD92

## Images

---



Western blot analysis of CD92 expression in HEK293T (A), HeLa (B), H446 (C) whole cell lysates.

Please note: All products are 'FOR RESEARCH USE ONLY. NOT FOR USE IN DIAGNOSTIC OR THERAPEUTIC PROCEDURES'.