

Anti-ADAMDEC1 Antibody

Catalog # AP53840

Product Information

Application	WB
Primary Accession	O15204
Reactivity	Human, Mouse, Rat
Host	Rabbit
Clonality	Polyclonal
Calculated MW	52775

Additional Information

Gene ID	27299
Other Names	ADAM DEC1; A disintegrin and metalloproteinase domain-like protein decysin-1; ADAM-like protein decysin-1
Target/Specificity	KLH-conjugated synthetic peptide encompassing a sequence within the center region of human ADAMDEC1. The exact sequence is proprietary.
Dilution	WB~~1/500 - 1/1000
Format	Liquid in 0.42% Potassium phosphate, 0.87% Sodium chloride, pH 7.3, 30% glycerol, and 0.09% (W/V) sodium azide.
Storage	Store at -20 °C.Stable for 12 months from date of receipt

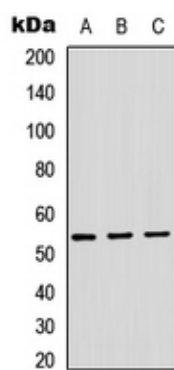
Protein Information

Name	ADAMDEC1
Function	May play an important role in the control of the immune response and during pregnancy.
Cellular Location	Secreted.
Tissue Location	Expressed highly in the small intestine and appendix, moderately in lymph node, mucosal lining of the colon, thymus, spleen and very weakly in the bone marrow. Predominantly expressed in dendritic cells (DC) of the germinal center. Weakly expressed in monocyte and highly expressed in macrophage. Absent in immature DC.

Background

Rabbit polyclonal antibody to ADAMDEC1

Images



Western blot analysis of ADAMDEC1 expression in HEK293T (A), Raw264.7 (B), H9C2 (C) whole cell lysates.

Please note: All products are 'FOR RESEARCH USE ONLY. NOT FOR USE IN DIAGNOSTIC OR THERAPEUTIC PROCEDURES'.