

# Anti-Nocturnin Antibody

Catalog # AP53828

## Product Information

---

Application	WB
Primary Accession	<a href="#">Q9UK39</a>
Reactivity	Human, Mouse, Rat
Host	Rabbit
Clonality	Polyclonal
Calculated MW	48196

## Additional Information

---

Gene ID	25819
Other Names	CCR4; NOC; Nocturnin; Carbon catabolite repression 4-like protein; Circadian deadenylase NOC
Target/Specificity	KLH-conjugated synthetic peptide encompassing a sequence within the center region of human Nocturnin. The exact sequence is proprietary.
Dilution	WB~~1/500 - 1/1000
Format	Liquid in 0.42% Potassium phosphate, 0.87% Sodium chloride, pH 7.3, 30% glycerol, and 0.09% (W/V) sodium azide.
Storage	Store at -20 °C.Stable for 12 months from date of receipt

## Protein Information

---

Name	NOCT ( <a href="#">HGNC:14254</a> )
Synonyms	CCR4, CCRN4L, NOC
Function	Phosphatase which catalyzes the conversion of NADP(+) to NAD(+) and of NADPH to NADH (PubMed: <a href="#">31147539</a> ). Shows a small preference for NADPH over NADP(+) (PubMed: <a href="#">31147539</a> ). Represses translation and promotes degradation of target mRNA molecules (PubMed: <a href="#">29860338</a> ). Plays an important role in post-transcriptional regulation of metabolic genes under circadian control (By similarity). Exerts a rhythmic post- transcriptional control of genes necessary for metabolic functions including nutrient absorption, glucose/insulin sensitivity, lipid metabolism, adipogenesis, inflammation and osteogenesis (By similarity). Plays an important role in favoring adipogenesis over osteoblastogenesis and acts as a key regulator of the adipogenesis/osteogenesis balance (By similarity). Promotes adipogenesis by facilitating PPARG nuclear translocation which activates its transcriptional activity (By similarity). Regulates circadian expression of NOS2 in the liver and

negatively regulates the circadian expression of IGF1 in the bone (By similarity). Critical for proper development of early embryos (By similarity).

#### Cellular Location

Cytoplasm {ECO:0000250|UniProtKB:O35710}. Nucleus {ECO:0000250|UniProtKB:O35710}. Cytoplasm, perinuclear region {ECO:0000250|UniProtKB:O35710}. Mitochondrion

#### Tissue Location

Adipose tissue. Expression is higher in subcutaneous adipose tissue as compared to visceral adipose tissue

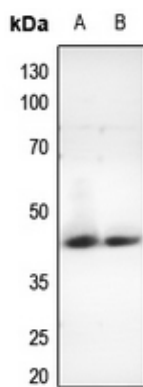
## Background

---

Rabbit polyclonal antibody to Nocturnin

## Images

---



Western blot analysis of Nocturnin expression in mouse muscle (A), rat muscle (B) whole cell lysates.

Please note: All products are 'FOR RESEARCH USE ONLY. NOT FOR USE IN DIAGNOSTIC OR THERAPEUTIC PROCEDURES'.