

# Anti-Neurologin 1 Antibody

Catalog # AP53827

## Product Information

---

Application	WB
Primary Accession	<a href="#">Q8N2Q7</a>
Reactivity	Human, Mouse, Rat
Host	Rabbit
Clonality	Polyclonal
Calculated MW	96368

## Additional Information

---

Gene ID	22871
Other Names	KIAA1070; Neurologin-1
Target/Specificity	KLH-conjugated synthetic peptide encompassing a sequence within the center region of human Neurologin 1. The exact sequence is proprietary.
Dilution	WB~~1/500 - 1/1000
Format	Liquid in 0.42% Potassium phosphate, 0.87% Sodium chloride, pH 7.3, 30% glycerol, and 0.09% (W/V) sodium azide.
Storage	Store at -20 °C.Stable for 12 months from date of receipt

## Protein Information

---

Name	NLGN1
Synonyms	KIAA1070
Function	Cell surface protein involved in cell-cell-interactions via its interactions with neurexin family members. Plays a role in synapse function and synaptic signal transmission, and probably mediates its effects by recruiting and clustering other synaptic proteins. May promote the initial formation of synapses, but is not essential for this. In vitro, triggers the de novo formation of presynaptic structures. May be involved in specification of excitatory synapses. Required to maintain wakefulness quality and normal synchrony of cerebral cortex activity during wakefulness and sleep (By similarity). The protein is involved in nervous system development.
Cellular Location	Cell membrane; Single-pass type I membrane protein {ECO:0000250 UniProtKB:Q62765} Postsynaptic density {ECO:0000250 UniProtKB:Q62765}. Synaptic cleft {ECO:0000250 UniProtKB:Q62765}. Synaptic cell membrane

{ECO:0000250|UniProtKB:Q62765}. Note=Enriched in synaptic plasma membranes and clustered in synaptic clefts and postsynaptic densities  
Colocalized with DLG4/PSD-95 and GRIN1/NMDAR1  
{ECO:0000250|UniProtKB:Q62765}

#### Tissue Location

Expressed in the blood vessel walls (at protein level). Highly expressed in brain through prenatal stages, and at lower levels in pancreas islet beta cells.

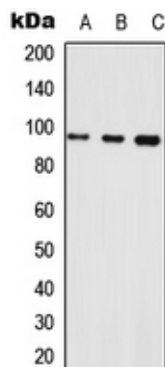
## Background

---

Rabbit polyclonal antibody to Neuroligin 1

## Images

---



Western blot analysis of Neuroligin 1 expression in HEK293T (A), Raw264.7 (B), PC12 (C) whole cell lysates.

Please note: All products are 'FOR RESEARCH USE ONLY. NOT FOR USE IN DIAGNOSTIC OR THERAPEUTIC PROCEDURES'.