

Anti-MAS1L Antibody

Catalog # AP53824

Product Information

Application	WB
Primary Accession	P35410
Reactivity	Human, Mouse, Rat
Host	Rabbit
Clonality	Polyclonal
Calculated MW	42411

Additional Information

Gene ID	116511
Other Names	MRG; Mas-related G-protein coupled receptor MRG; MAS-R; MAS1-like
Target/Specificity	KLH-conjugated synthetic peptide encompassing a sequence within the center region of human MAS1L. The exact sequence is proprietary.
Dilution	WB~~1/500 - 1/1000
Format	Liquid in 0.42% Potassium phosphate, 0.87% Sodium chloride, pH 7.3, 30% glycerol, and 0.09% (W/V) sodium azide.
Storage	Store at -20 °C.Stable for 12 months from date of receipt

Protein Information

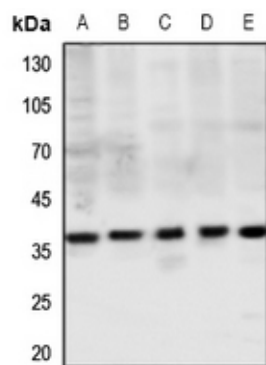
Name	MAS1L
Synonyms	MRG
Cellular Location	Cell membrane; Multi-pass membrane protein.

Background

Rabbit polyclonal antibody to MAS1L

Images

Western blot analysis of MAS1L expression in Hela (A), H446 (B), mouse lung (C), mouse testis (D), rat lung (E) whole cell lysates.



Please note: All products are 'FOR RESEARCH USE ONLY. NOT FOR USE IN DIAGNOSTIC OR THERAPEUTIC PROCEDURES'.