

# Anti-HLA-DQB1 Antibody

Catalog # AP53819

## Product Information

---

<b>Application</b>	WB
<b>Primary Accession</b>	<a href="#">P01920</a>
<b>Other Accession</b>	<a href="#">P05538</a>
<b>Reactivity</b>	Human, Mouse, Rat
<b>Host</b>	Rabbit
<b>Clonality</b>	Polyclonal

## Additional Information

---

<b>Other Names</b>	HLA-DQB1; HLA-DQB; HLA class II histocompatibility antigen, DQ beta 1 chain; MHC class II antigen DQB1; HLA-DQB2; HLA-DXB; HLA class II histocompatibility antigen, DQ beta 2 chain; HLA class II histocompatibility antigen, DX beta chain; MHC class II antigen DQB2
<b>Target/Specificity</b>	KLH-conjugated synthetic peptide encompassing a sequence within the center region of human HLA-DQB1. The exact sequence is proprietary.
<b>Dilution</b>	WB~~1/500 - 1/1000
<b>Format</b>	Liquid in 0.42% Potassium phosphate, 0.87% Sodium chloride, pH 7.3, 30% glycerol, and 0.09% (W/V) sodium azide.
<b>Storage</b>	Store at -20 °C. Stable for 12 months from date of receipt

## Protein Information

---

### Background

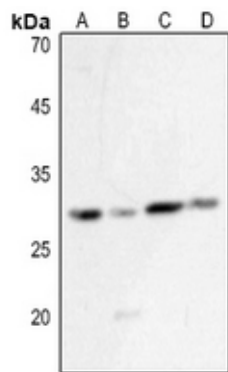
---

Rabbit polyclonal antibody to HLA-DQB1

### Images

---

Western blot analysis of HLA-DQB1 expression in mouse lung (A), mouse spleen (B), rat lung (C), rat spleen (D) whole cell lysates.



Please note: All products are 'FOR RESEARCH USE ONLY. NOT FOR USE IN DIAGNOSTIC OR THERAPEUTIC PROCEDURES'.