

Anti-CYFIP1 Antibody

Catalog # AP53808

Product Information

Application	WB
Primary Accession	Q7L576
Reactivity	Human, Mouse, Rat
Host	Rabbit
Clonality	Polyclonal
Calculated MW	145182

Additional Information

Gene ID	23191
Other Names	KIAA0068; Cytoplasmic FMR1-interacting protein 1; Specifically Rac1-associated protein 1; Sra-1; p140sra-1
Target/Specificity	KLH-conjugated synthetic peptide encompassing a sequence within the C-term region of human CYFIP1. The exact sequence is proprietary.
Dilution	WB~~1/500 - 1/1000
Format	Liquid in 0.42% Potassium phosphate, 0.87% Sodium chloride, pH 7.3, 30% glycerol, and 0.09% (W/V) sodium azide.
Storage	Store at -20 °C.Stable for 12 months from date of receipt

Protein Information

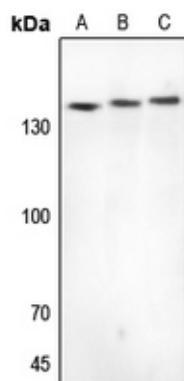
Name	CYFIP1 (HGNC:13759)
Function	Component of the CYFIP1-EIF4E-FMR1 complex which binds to the mRNA cap and mediates translational repression. In the CYFIP1-EIF4E- FMR1 complex this subunit is an adapter between EIF4E and FMR1. Promotes the translation repression activity of FMR1 in brain probably by mediating its association with EIF4E and mRNA (By similarity). Regulates formation of membrane ruffles and lamellipodia. Plays a role in axon outgrowth. Binds to F-actin but not to RNA. Part of the WAVE complex that regulates actin filament reorganization via its interaction with the Arp2/3 complex. Actin remodeling activity is regulated by RAC1. Regulator of epithelial morphogenesis. As component of the WAVE1 complex, required for BDNF-NTRK2 endocytic trafficking and signaling from early endosomes (By similarity). May act as an invasion suppressor in cancers.
Cellular Location	Cytoplasm {ECO:0000250 UniProtKB:Q7TMB8}. Cytoplasm, perinuclear region {ECO:0000250 UniProtKB:Q7TMB8}. Cell projection, lamellipodium

{ECO:0000250|UniProtKB:Q7TMB8}. Cell projection, ruffle
{ECO:0000250|UniProtKB:Q7TMB8}. Synapse, synaptosome
{ECO:0000250|UniProtKB:Q7TMB8}. Note=Highly expressed in the perinuclear region (By similarity). Enriched in synaptosomes (By similarity). Also enriched in membrane ruffles and at the tips of lamellipodia (By similarity). {ECO:0000250|UniProtKB:Q7TMB8}

Background

Rabbit polyclonal antibody to CYFIP1

Images



Western blot analysis of CYFIP1 expression in HeLa (A), mouse brain (B), rat brain (C) whole cell lysates.

Please note: All products are 'FOR RESEARCH USE ONLY. NOT FOR USE IN DIAGNOSTIC OR THERAPEUTIC PROCEDURES'.