

Anti-ARHGAP20 Antibody

Catalog # AP53801

Product Information

Application	WB
Primary Accession	Q9P2F6
Reactivity	Human, Rat
Host	Rabbit
Clonality	Polyclonal
Calculated MW	132608

Additional Information

Gene ID	57569
Other Names	KIAA1391; Rho GTPase-activating protein 20; Rho-type GTPase-activating protein 20
Target/Specificity	KLH-conjugated synthetic peptide encompassing a sequence within the center region of human ARHGAP20. The exact sequence is proprietary.
Dilution	WB~~1/500 - 1/1000
Format	Liquid in 0.42% Potassium phosphate, 0.87% Sodium chloride, pH 7.3, 30% glycerol, and 0.09% (W/V) sodium azide.
Storage	Store at -20 °C.Stable for 12 months from date of receipt

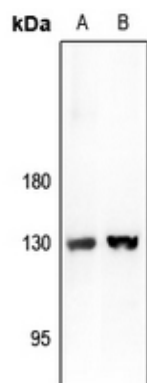
Protein Information

Name	ARHGAP20
Synonyms	KIAA1391
Function	GTPase activator for the Rho-type GTPases by converting them to an inactive GDP-bound state.
Tissue Location	Expressed predominantly in the brain. Lower expression is found in lymph nodes.

Background

Rabbit polyclonal antibody to ARHGAP20

Images



Western blot analysis of ARHGAP20 expression in C6 (A), HeLa (B) whole cell lysates.

Please note: All products are 'FOR RESEARCH USE ONLY. NOT FOR USE IN DIAGNOSTIC OR THERAPEUTIC PROCEDURES'.