

Anti-MEKK2 Antibody

Catalog # AP53766

Product Information

Application	WB
Primary Accession	Q9Y2U5
Reactivity	Human, Mouse, Rat
Host	Rabbit
Clonality	Polyclonal
Calculated MW	69741

Additional Information

Gene ID	10746
Other Names	MAPKKK2; MEKK2; Mitogen-activated protein kinase kinase 2; MAPK/ERK kinase kinase 2; MEK kinase 2; MEKK 2
Target/Specificity	KLH-conjugated synthetic peptide encompassing a sequence within the center region of human MEKK2. The exact sequence is proprietary.
Dilution	WB~~1/500 - 1/1000
Format	Liquid in 0.42% Potassium phosphate, 0.87% Sodium chloride, pH 7.3, 30% glycerol, and 0.09% (W/V) sodium azide.
Storage	Store at -20 °C.Stable for 12 months from date of receipt

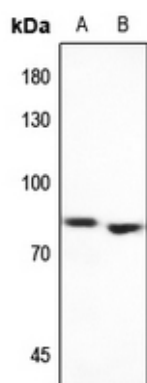
Protein Information

Name	MAP3K2
Synonyms	MAPKKK2, MEKK2
Function	Component of a protein kinase signal transduction cascade. Regulates the JNK and ERK5 pathways by phosphorylating and activating MAP2K5 and MAP2K7 (By similarity). Plays a role in caveolae kiss-and- run dynamics.
Cellular Location	Cytoplasm. Nucleus. Note=Upon EGF stimulation, translocates into the nucleus

Background

Rabbit polyclonal antibody to MEKK2

Images



Western blot analysis of MEKK2 expression in mouse kidney (A), rat kidney (B) whole cell lysates.

Please note: All products are 'FOR RESEARCH USE ONLY. NOT FOR USE IN DIAGNOSTIC OR THERAPEUTIC PROCEDURES'.