

# Anti-CREG1 Antibody

Catalog # AP53764

## Product Information

---

Application	WB
Primary Accession	<a href="#">O75629</a>
Reactivity	Human, Mouse, Rat
Host	Rabbit
Clonality	Polyclonal
Calculated MW	24075

## Additional Information

---

Gene ID	8804
Other Names	CREG; Protein CREG1; Cellular repressor of E1A-stimulated genes 1
Target/Specificity	KLH-conjugated synthetic peptide encompassing a sequence within the C-term region of human CREG1. The exact sequence is proprietary.
Dilution	WB~~1/500 - 1/1000
Format	Liquid in 0.42% Potassium phosphate, 0.87% Sodium chloride, pH 7.3, 30% glycerol, and 0.09% (W/V) sodium azide.
Storage	Store at -20 °C.Stable for 12 months from date of receipt

## Protein Information

---

Name	CREG1
Synonyms	CREG
Function	May contribute to the transcriptional control of cell growth and differentiation. Antagonizes transcriptional activation and cellular transformation by the adenovirus E1A protein. The transcriptional control activity of cell growth requires interaction with IGF2R.
Cellular Location	Secreted.

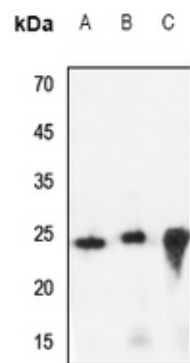
## Background

---

Rabbit polyclonal antibody to CREG1

## Images

---



Western blot analysis of CREG1 expression in HEK293T (A), Hela (B), mouse spleen (C) whole cell lysates.

Please note: All products are 'FOR RESEARCH USE ONLY. NOT FOR USE IN DIAGNOSTIC OR THERAPEUTIC PROCEDURES'.