

Anti-CLEC14A Antibody

Catalog # AP53752

Product Information

| | |
|-------------------|------------------------|
| Application | WB |
| Primary Accession | Q86T13 |
| Reactivity | Human, Mouse, Rat |
| Host | Rabbit |
| Clonality | Polyclonal |
| Calculated MW | 51636 |

Additional Information

| | |
|--------------------|---|
| Gene ID | 161198 |
| Other Names | C14orf27; EGFR5; C-type lectin domain family 14 member A; Epidermal growth factor receptor 5; EGFR-5 |
| Target/Specificity | Recognizes endogenous levels of CLEC14A protein. |
| Dilution | WB~~1/500 - 1/1000 |
| Format | Liquid in 0.42% Potassium phosphate, 0.87% Sodium chloride, pH 7.3, 30% glycerol, and 0.09% (W/V) sodium azide. |
| Storage | Store at -20 °C.Stable for 12 months from date of receipt |

Protein Information

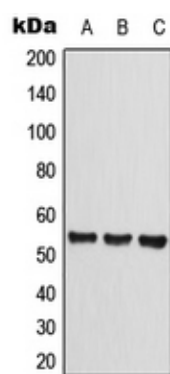
| | |
|-------------------|---|
| Name | CLEC14A |
| Synonyms | C14orf27, EGFR5 |
| Cellular Location | Membrane; Single-pass type I membrane protein |

Background

Rabbit polyclonal antibody to CLEC14A

Images

Western blot analysis of CLEC14A expression in HEK293T (A), Raw264.7 (B), rat liver (C) whole cell lysates.



Please note: All products are 'FOR RESEARCH USE ONLY. NOT FOR USE IN DIAGNOSTIC OR THERAPEUTIC PROCEDURES'.