

Anti-ADAM23 Antibody

Catalog # AP53714

Product Information

| | |
|--------------------------|------------------------|
| Application | WB |
| Primary Accession | O75077 |
| Reactivity | Human, Mouse |
| Host | Rabbit |
| Clonality | Polyclonal |
| Calculated MW | 91926 |

Additional Information

| | |
|---------------------------|---|
| Gene ID | 8745 |
| Other Names | MDC3; Disintegrin and metalloproteinase domain-containing protein 23; ADAM 23; Metalloproteinase-like, disintegrin-like, and cysteine-rich protein 3; MDC-3 |
| Target/Specificity | Recognizes endogenous levels of ADAM23 protein. |
| Dilution | WB~~1/500 - 1/1000 |
| Format | Liquid in 0.42% Potassium phosphate, 0.87% Sodium chloride, pH 7.3, 30% glycerol, and 0.09% (W/V) sodium azide. |
| Storage | Store at -20 °C.Stable for 12 months from date of receipt |

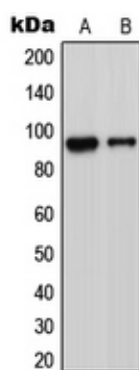
Protein Information

| | |
|--------------------------|--|
| Name | ADAM23 |
| Synonyms | MDC3 |
| Function | May play a role in cell-cell and cell-matrix interactions. This is a non-catalytic metalloprotease-like protein. |
| Cellular Location | Cell membrane; Single-pass type I membrane protein |
| Tissue Location | Highly expressed in the brain and weakly expressed in the heart. In the brain, expressed prominently in the amygdala, caudate nucleus, hypothalamus, thalamus, cerebral cortex and occipital pole. |

Background

Rabbit polyclonal antibody to ADAM23

Images



Western blot analysis of ADAM23 expression in Jurkat (A), MCF7 (B), Raw264.7 (C) whole cell lysates.

Please note: All products are 'FOR RESEARCH USE ONLY. NOT FOR USE IN DIAGNOSTIC OR THERAPEUTIC PROCEDURES'.