

# Anti-Connexin 32 Antibody

Catalog # AP53672

## Product Information

---

Application	WB
Primary Accession	<a href="#">P08034</a>
Reactivity	Human, Mouse, Rat
Host	Rabbit
Clonality	Polyclonal
Calculated MW	32025

## Additional Information

---

Gene ID	2705
Other Names	CX32; Gap junction beta-1 protein; Connexin-32; Cx32; GAP junction 28 kDa liver protein
Target/Specificity	KLH-conjugated synthetic peptide encompassing a sequence within the center region of human Connexin 32. The exact sequence is proprietary.
Dilution	WB~~1/500 - 1/1000
Format	Liquid in 0.42% Potassium phosphate, 0.87% Sodium chloride, pH 7.3, 30% glycerol, and 0.09% (W/V) sodium azide.
Storage	Store at -20 °C.Stable for 12 months from date of receipt

## Protein Information

---

Name	GJB1
Synonyms	CX32
Function	One gap junction consists of a cluster of closely packed pairs of transmembrane channels, the connexons, through which materials of low MW diffuse from one cell to a neighboring cell.
Cellular Location	Cell membrane; Multi-pass membrane protein. Cell junction, gap junction

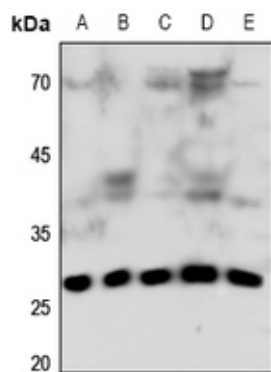
## Background

---

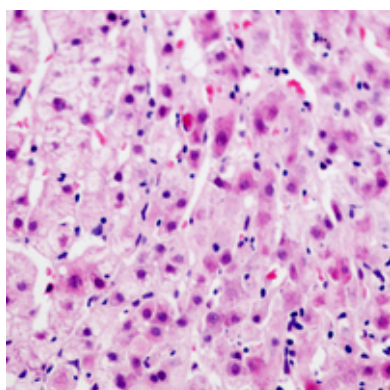
Rabbit polyclonal antibody to Connexin 32

## Images

---



Western blot analysis of Connexin 32 expression in LOVO (A), mouse brain (B), mouse lung (C), mouse kidney (D), rat kidney (E) whole cell lysates.



Immunohistochemical analysis of Connexin 32 staining in human liver cancer formalin fixed paraffin embedded tissue section. The section was pre-treated using heat mediated antigen retrieval with sodium citrate buffer (pH 6.0). The section was then incubated with the antibody at room temperature and detected using an HRP conjugated compact polymer system. AEC was used as the chromogen. The section was then counterstained with haematoxylin and mounted with DPX.

Please note: All products are 'FOR RESEARCH USE ONLY. NOT FOR USE IN DIAGNOSTIC OR THERAPEUTIC PROCEDURES'.