

Anti-FOXM1 Antibody

Catalog # AP53669

Product Information

Application	WB
Primary Accession	Q08050
Reactivity	Human, Mouse, Rat
Host	Rabbit
Clonality	Polyclonal
Calculated MW	84283

Additional Information

Gene ID	2305
Other Names	FKHL16; HFH11; MPP2; WIN; Forkhead box protein M1; Forkhead-related protein FKHL16; Hepatocyte nuclear factor 3 forkhead homolog 11; HFH-11; HNF-3/fork-head homolog 11; M-phase phosphoprotein 2; MPM-2 reactive phosphoprotein 2; Transcription factor Trident; Winged-helix factor from INS-1 cells
Target/Specificity	Recognizes endogenous levels of FOXM1 protein.
Dilution	WB~~1/500 - 1/1000
Format	Liquid in 0.42% Potassium phosphate, 0.87% Sodium chloride, pH 7.3, 30% glycerol, and 0.09% (W/V) sodium azide.
Storage	Store at -20 °C.Stable for 12 months from date of receipt

Protein Information

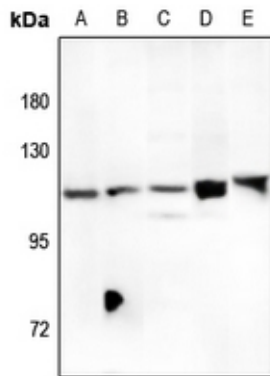
Name	FOXM1
Synonyms	FKHL16, HFH11, MPP2, WIN
Function	Transcription factor regulating the expression of cell cycle genes essential for DNA replication and mitosis (PubMed: 19160488 , PubMed: 20360045). Plays a role in the control of cell proliferation (PubMed: 19160488). Also plays a role in DNA break repair, participating in the DNA damage checkpoint response (PubMed: 17101782). Promotes transcription of PHB2 (PubMed: 33754036).
Cellular Location	Nucleus.
Tissue Location	Expressed in thymus, testis, small intestine, colon followed by ovary. Appears to be expressed only in adult organs containing proliferating/cycling cells or in

response to growth factors. Also expressed in epithelial cell lines derived from tumors Not expressed in resting cells. Isoform 2 is highly expressed in testis

Background

Rabbit polyclonal antibody to FOXM1

Images



Western blot analysis of FOXM1 expression in mouse testis (A), rat ovary (B), HCT116 (C), H1792 (D), MCF7 (E) whole cell lysates.

Please note: All products are 'FOR RESEARCH USE ONLY. NOT FOR USE IN DIAGNOSTIC OR THERAPEUTIC PROCEDURES'.