

Anti-Aggrecan Antibody

Catalog # AP53656

Product Information

Application	WB
Primary Accession	P16112
Reactivity	Human, Mouse, Rat
Host	Rabbit
Clonality	Polyclonal
Calculated MW	261329

Additional Information

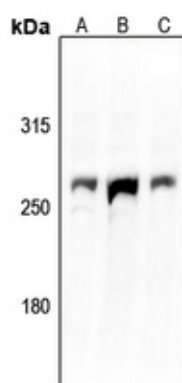
Gene ID	176
Other Names	AGC1; CSPG1; MSK16; Aggrecan core protein; Cartilage-specific proteoglycan core protein; CSPCP; Chondroitin sulfate proteoglycan core protein 1; Chondroitin sulfate proteoglycan 1
Target/Specificity	Recognizes endogenous levels of Aggrecan protein.
Dilution	WB~~1/500 - 1/1000
Format	Liquid in 0.42% Potassium phosphate, 0.87% Sodium chloride, pH 7.3, 30% glycerol, and 0.09% (W/V) sodium azide.
Storage	Store at -20 °C.Stable for 12 months from date of receipt

Protein Information

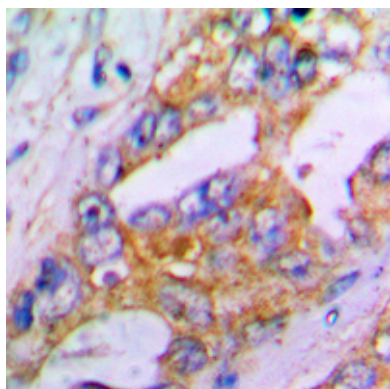
Name	ACAN
Synonyms	AGC1, CSPG1, MSK16
Function	This proteoglycan is a major component of extracellular matrix of cartilagenous tissues. A major function of this protein is to resist compression in cartilage. It binds avidly to hyaluronic acid via an N-terminal globular region.
Cellular Location	Secreted, extracellular space, extracellular matrix {ECO:0000250 UniProtKB:P07898}
Tissue Location	Detected in fibroblasts (at protein level) (PubMed:36213313). Restricted to cartilage (PubMed:7524681)

Background

Images



Western blot analysis of Aggrecan expression in CT26 (A), C6 (B), HeLa (C) whole cell lysates.



Immunohistochemical analysis of Aggrecan staining in human lung cancer formalin fixed paraffin embedded tissue section. The section was pre-treated using heat mediated antigen retrieval with sodium citrate buffer (pH 6.0). The section was then incubated with the antibody at room temperature and detected using an HRP conjugated compact polymer system. DAB was used as the chromogen. The section was then counterstained with haematoxylin and mounted with DPX.

Please note: All products are 'FOR RESEARCH USE ONLY. NOT FOR USE IN DIAGNOSTIC OR THERAPEUTIC PROCEDURES'.