

Anti-Adenylate Cyclase 5/6 Antibody

Catalog # AP53655

Product Information

Application	WB, IF
Primary Accession	O95622
Other Accession	Q43306
Reactivity	Human, Mouse, Rat
Host	Rabbit
Clonality	Polyclonal
Calculated MW	138908

Additional Information

Gene ID	111
Other Names	ADCY5; Adenylate cyclase type 5; ATP pyrophosphate-lyase 5; Adenylate cyclase type V; Adenylyl cyclase 5; ADCY6; KIAA0422; Adenylate cyclase type 6; ATP pyrophosphate-lyase 6; Adenylate cyclase type VI; Adenylyl cyclase 6; Ca(2+)-inhibitable adenylyl cyclase
Target/Specificity	Recognizes endogenous levels of Adenylate Cyclase 5/6 protein.
Dilution	WB~~1/500 - 1/1000 IF~~1/50 - 1/200
Format	Liquid in 0.42% Potassium phosphate, 0.87% Sodium chloride, pH 7.3, 30% glycerol, and 0.09% (W/V) sodium azide.
Storage	Store at -20 °C.Stable for 12 months from date of receipt

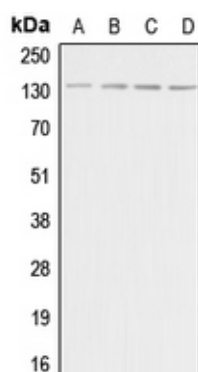
Protein Information

Name	ADCY5
Function	Catalyzes the formation of the signaling molecule cAMP in response to G-protein signaling (PubMed: 15385642 , PubMed: 24700542 , PubMed: 26206488). Mediates signaling downstream of ADRB1 (PubMed: 24700542). Regulates the increase of free cytosolic Ca(2+) in response to increased blood glucose levels and contributes to the regulation of Ca(2+)-dependent insulin secretion (PubMed: 24740569).
Cellular Location	Cell membrane; Multi-pass membrane protein. Cell projection, cilium {ECO:0000250 UniProtKB:P84309}
Tissue Location	Detected in pancreas islets (at protein level). Expressed in the brain, with high expression in the corpus striatum (PubMed:26085604).

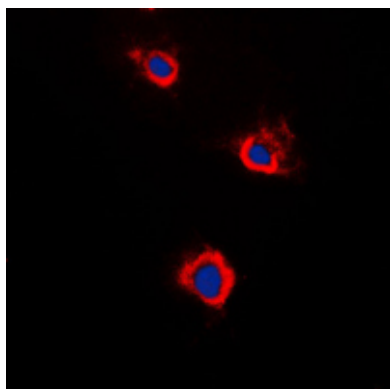
Background

Rabbit polyclonal antibody to Adenylate Cyclase 5/6

Images



Western blot analysis of Adenylate Cyclase 5/6 expression in HeLa (A), Raw264.7 (B), PC12 (C), rat brain (D) whole cell lysates.



Immunofluorescent analysis of Adenylate Cyclase 5/6 staining in Raw264.7 cells. Formalin-fixed cells were permeabilized with 0.1% Triton X-100 in TBS for 5-10 minutes and blocked with 3% BSA-PBS for 30 minutes at room temperature. Cells were probed with the primary antibody in 3% BSA-PBS and incubated overnight at 4 °C in a humidified chamber. Cells were washed with PBST and incubated with a DyLight 594-conjugated secondary antibody (red) in PBS at room temperature in the dark. DAPI was used to stain the cell nuclei (blue).

Please note: All products are 'FOR RESEARCH USE ONLY. NOT FOR USE IN DIAGNOSTIC OR THERAPEUTIC PROCEDURES'.