

# Nuf2 Rabbit pAb

Catalog # AP53648

## Product Information

---

<b>Application</b>	WB, IF, FC, ICC
<b>Primary Accession</b>	<a href="#">Q9BZD4</a>
<b>Reactivity</b>	Human
<b>Host</b>	Rabbit
<b>Clonality</b>	Polyclonal Antibody
<b>Isotype</b>	IgG
<b>Conjugate</b>	Unconjugated
<b>Immunogen</b>	A synthetic peptide of human Nuf2
<b>Purification</b>	Affinity Purified
<b>Calculated MW</b>	54304

## Additional Information

---

<b>Gene ID</b>	83540
<b>Other Names</b>	CDCA1; CT106; hNuf2; hNuf2R; hsNuf2; NUF2; NUF2R
<b>Target/Specificity</b>	50mM Tris-Glycine(pH 7.4), 0.15M NaCl, 40% Glycerol, 0.01% Sodium azide and 0.05% BSA
<b>Dilution</b>	WB~~1:1000 IF~~1:50~200 FC~~1:10~50 ICC~~N/A
<b>Format</b>	Liquid in 50mM Tris-Glycine(pH 7.4), 0.15M NaCl, 40%Glycerol, 0.01% sodium azide and 0.05% BSA.
<b>Storage</b>	Store at 4°C short term. Aliquot and store at -20°C long term. Avoid freeze/thaw cycles.

## Protein Information

---

<b>Name</b>	NUF2
<b>Synonyms</b>	CDCA1, NUF2R
<b>Function</b>	Acts as a component of the essential kinetochore-associated NDC80 complex, which is required for chromosome segregation and spindle checkpoint activity (PubMed: <a href="#">12438418</a> , PubMed: <a href="#">14654001</a> , PubMed: <a href="#">15062103</a> , PubMed: <a href="#">15235793</a> , PubMed: <a href="#">15239953</a> , PubMed: <a href="#">15548592</a> , PubMed: <a href="#">17535814</a> ). Required for kinetochore integrity and the organization of stable microtubule binding sites in the outer plate of the kinetochore (PubMed: <a href="#">15548592</a> ). The NDC80 complex synergistically enhances the affinity of the SKA1 complex for microtubules and may allow the NDC80 complex to track depolymerizing microtubules

(PubMed:[23085020](#)).

### Cellular Location

Nucleus. Chromosome, centromere, kinetochore. Note=Localizes to kinetochores from late prophase to anaphase Localizes specifically to the outer plate of the kinetochore. NDC80 is required for efficient kinetochore localization

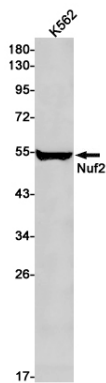
## Background

---

Acts as a component of the essential kinetochore-associated NDC80 complex, which is required for chromosome segregation and spindle checkpoint activity. Required for kinetochore integrity and the organization of stable microtubule binding sites in the outer plate of the kinetochore.

## Images

---



Western blot analysis of Nuf2 in K562 lysates using Nuf2 antibody.

Please note: All products are 'FOR RESEARCH USE ONLY. NOT FOR USE IN DIAGNOSTIC OR THERAPEUTIC PROCEDURES'.