

# CAP1 Rabbit pAb

Catalog # AP53530

## Product Information

---

<b>Application</b>	WB, IHC, IP
<b>Primary Accession</b>	<a href="#">Q01518</a>
<b>Host</b>	Rabbit
<b>Clonality</b>	Polyclonal Antibody
<b>Calculated MW</b>	51901

## Additional Information

---

<b>Gene ID</b>	10487
<b>Other Names</b>	Adenylyl cyclase-associated protein 1, CAP 1, CAP1, CAP
<b>Dilution</b>	WB~~1:1000 IHC~~1:100~500 IP~~N/A
<b>Format</b>	50mM Tris-Glycine(pH 7.4), 0.15M NaCl, 40%Glycerol, 0.01% sodium azide and 0.05% BSA.
<b>Storage</b>	Store at 4°C short term. Aliquot and store at -20°C long term. Avoid freeze/thaw cycles.

## Protein Information

---

<b>Name</b>	CAP1
<b>Synonyms</b>	CAP
<b>Function</b>	Directly regulates filament dynamics and has been implicated in a number of complex developmental and morphological processes, including mRNA localization and the establishment of cell polarity.
<b>Cellular Location</b>	Cell membrane; Peripheral membrane protein

## Background

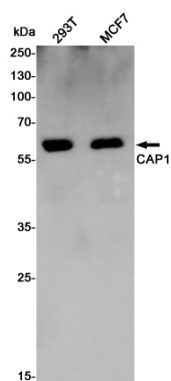
---

Swiss-Prot Acc.Q01518.

## Images

---

Western blot detection of CAP1 in 293T,MCF7 cell lysates using CAP1 Rabbit pAb(1:1000 diluted).Predicted band



size:52KDa.Observed band size:56KDa.

Please note: All products are 'FOR RESEARCH USE ONLY. NOT FOR USE IN DIAGNOSTIC OR THERAPEUTIC PROCEDURES'.