

Anti-SOD2 Antibody

Mouse Monoclonal Antibody
Catalog # AP53486

Product Information

Application	WB
Primary Accession	P04179
Other Accession	NM_000636
Reactivity	Human
Host	Mouse
Clonality	Monoclonal
Isotype	IgG2b
Immunogen	Synthetic peptide corresponding to human SOD2 protein
Purification	Affinity purified
Calculated MW	24750

Additional Information

Gene ID	6648
Other Names	Indophenoxidase B; IPO B; IPOB; Manganese containing superoxide dismutase; Manganese SOD; Manganese superoxide dismutase; Mangano superoxide dismutase; Mn SOD; Mn superoxide dismutase; MNSOD; MVCD6; SOD 2; SOD2; SODM_HUMAN; Superoxide dismutase [Mn] mitochondrial; Superoxide dismutase [Mn], mitochondrial; Superoxide dismutase 2 mitochondrial.
Dilution	WB~~1:1000
Format	Liquid in PBS containing 50% glycerol, 0.5% BSA and 0.02% sodium azide, pH 7.3.
Storage	Store at 4°C short term. Aliquot and store at -20°C long term. Avoid freeze/thaw cycles.

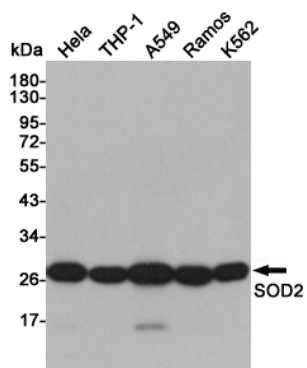
Protein Information

Name	SOD2
Function	Destroys superoxide anion radicals which are normally produced within the cells and which are toxic to biological systems.
Cellular Location	Mitochondrion matrix.

Background

Destroys superoxide anion radicals which are normally produced within the cells and which are toxic to biological systems.

Images



Western blot detection of SOD2 in HeLa, THP-1, A549 Ramos and K562 cell lysates using SOD2 Mouse mAb (1:1000 diluted). Predicted band size: 25KDa. Observed band size: 22KDa.

Please note: All products are 'FOR RESEARCH USE ONLY. NOT FOR USE IN DIAGNOSTIC OR THERAPEUTIC PROCEDURES'.