

Anti-Enolase-2 Antibody

Mouse Monoclonal Antibody

Catalog # AP53433

Product Information

Application	WB, E
Primary Accession	P09104
Other Accession	NM_001975
Reactivity	Human, Mouse, Rat
Host	Mouse
Clonality	Monoclonal
Isotype	IgG1
Immunogen	Synthetic peptide derived from human NSE.
Purification	Affinity purified
Calculated MW	47269

Additional Information

Gene ID	2026
Other Names	2 phospho D glycerate hydrolyase;2-phospho-D-glycerate hydro-lyase;Eno 2;ENO2;ENOG;ENOG_HUMAN;Enolase 2 (gamma, neuronal);Enolase 2;Enolase 2 gamma neuronal;Enolase2;Epididymis secretory protein Li 279;Gamma enolase;Gamma-enolase;HEL S 279;Neural enolase;Neuron specific enolase;Neuron specific gamma enolase;Neuron-specific enolase;Neurone specific enolase;NSE
Dilution	WB~~1:500 E~~N/A
Format	Liquid in PBS containing 50% glycerol, 0.5% BSA and 0.02% sodium azide, pH 7.3.
Storage	Store at 4°C short term. Aliquot and store at -20°C long term. Avoid freeze/thaw cycles.

Protein Information

Name	ENO2
Function	Has neurotrophic and neuroprotective properties on a broad spectrum of central nervous system (CNS) neurons. Binds, in a calcium- dependent manner, to cultured neocortical neurons and promotes cell survival (By similarity).
Cellular Location	Cytoplasm. Cell membrane. Note=Can translocate to the plasma membrane in either the homodimeric (alpha/alpha) or heterodimeric (alpha/gamma)

form

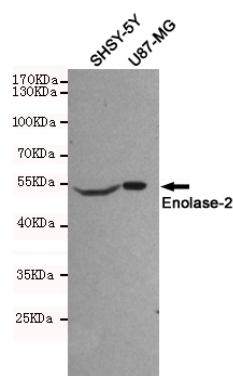
Tissue Location

The alpha/alpha homodimer is expressed in embryo and in most adult tissues. The alpha/beta heterodimer and the beta/beta homodimer are found in striated muscle, and the alpha/gamma heterodimer and the gamma/gamma homodimer in neurons

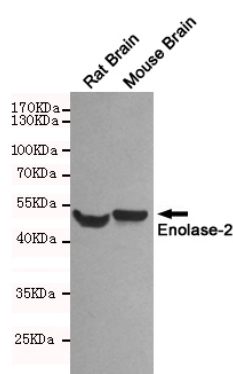
Background

Has neurotrophic and neuroprotective properties on a broad spectrum of central nervous system (CNS) neurons. Binds, in a calcium-dependent manner, to cultured neocortical neurons and promotes cell survival.

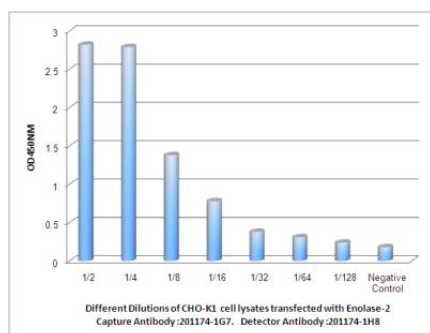
Images



Western blot detection of Enolase-2 in SHSY-5Y and U87-MG cell lysates using Enolase-2 mouse mAb (1:500 diluted). Predicted band size: 47KDa. Observed band size: 47KDa.



Western blot detection of Enolase-2 in Rat Brain and Mouse Brain lysates using Enolase-2 mouse mAb (1:500 diluted). Predicted band size: 47KDa. Observed band size: 47KDa.



Observed Enolase-2 levels in CHO-K1 cell lysates transfected with Enolase-2 at different dilution.

Please note: All products are 'FOR RESEARCH USE ONLY. NOT FOR USE IN DIAGNOSTIC OR THERAPEUTIC PROCEDURES'.