

# Anti-Enolase-2 Antibody

Mouse Monoclonal Antibody  
Catalog # AP53432

## Product Information

---

|                          |   |
|--------------------------|---|
| <b>Application</b>       | WB, E                                     |
| <b>Primary Accession</b> | <a href="#">P09104</a>                    |
| <b>Other Accession</b>   | <a href="#">NM_001975</a>                 |
| <b>Reactivity</b>        | Human, Mouse, Rat                         |
| <b>Host</b>              | Mouse                                     |
| <b>Clonality</b>         | Monoclonal                                |
| <b>Isotype</b>           | IgG1                                      |
| <b>Immunogen</b>         | Synthetic peptide derived from human NSE. |
| <b>Purification</b>      | Affinity purified                         |
| <b>Calculated MW</b>     | 47269                                     |

## Additional Information

---

|                    |   |
|--------------------|---|
| <b>Gene ID</b>     | 2026  |
| <b>Other Names</b> | 2 phospho D glycerate hydrolyase;2-phospho-D-glycerate hydro-lyase;Eno 2;ENO2;ENOG;ENOG_HUMAN;Enolase 2 (gamma, neuronal);Enolase 2;Enolase 2 gamma neuronal;Enolase2;Epididymis secretory protein Li 279;Gamma enolase;Gamma-enolase;HEL S 279;Neural enolase;Neuron specific enolase;Neuron specific gamma enolase;Neuron-specific enolase;Neurone specific enolase;NSE |
| <b>Dilution</b>    | WB~~1:1000 E~~N/A   |
| <b>Format</b>      | Liquid in PBS containing 50% glycerol, 0.5% BSA and 0.02% sodium azide, pH 7.3.   |
| <b>Storage</b>     | Store at 4°C short term. Aliquot and store at -20°C long term. Avoid freeze/thaw cycles.  |

## Protein Information

---

|                 |  |
|-----------------|--|
| <b>Name</b>     | ENO2 ( <a href="#">HGNC:3353</a> )   |
| <b>Function</b> | Enolase that catalyzes the conversion of 2-phosphoglycerate to phosphoenolpyruvate in glycolysis and the reverse reaction in gluconeogenesis (By similarity). Has neurotrophic and neuroprotective properties on a broad spectrum of central nervous system (CNS) neurons. Binds, in a calcium-dependent manner, to cultured neocortical neurons and promotes cell survival (By similarity). |

## Cellular Location

Cytoplasm. Cell membrane. Note=Can translocate to the plasma membrane in either the homodimeric (alpha/alpha) or heterodimeric (alpha/gamma) form

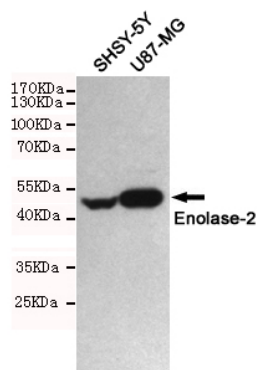
## Tissue Location

The alpha/alpha homodimer is expressed in embryo and in most adult tissues. The alpha/beta heterodimer and the beta/beta homodimer are found in striated muscle, and the alpha/gamma heterodimer and the gamma/gamma homodimer in neurons

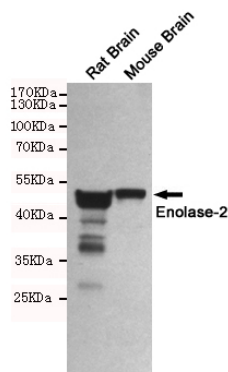
## Background

Has neurotrophic and neuroprotective properties on a broad spectrum of central nervous system (CNS) neurons. Binds, in a calcium-dependent manner, to cultured neocortical neurons and promotes cell survival.

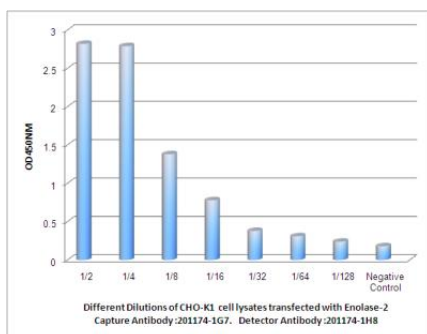
## Images



Western blot detection of Enolase-2 in SHSY-5Y and U87-MG cell lysates using Enolase-2 mouse mAb (1:1000 diluted). Predicted band size:47KDa. Observed band size:47KDa.



Western blot detection of Enolase-2 in Rat Brain and Mouse Brain lysates using Enolase-2 mouse mAb (1:1000 diluted). Predicted band size:47KDa. Observed band size:47KDa.



Observed Enolase-2 levels in CHO-K1 cell lysates transfected with Enolase-2 at different dilution.

Please note: All products are 'FOR RESEARCH USE ONLY. NOT FOR USE IN DIAGNOSTIC OR THERAPEUTIC PROCEDURES'.