

GPR10 Antibody

Purified Rabbit Polyclonal Antibody (Pab)

Catalog # AP53363

Product Information

Application	WB
Primary Accession	P49683
Reactivity	Human
Host	Rabbit
Clonality	Polyclonal
Calculated MW	41121

Additional Information

Gene ID	2834
Other Names	Prolactin-releasing peptide receptor, PrRP receptor, PrRPR, G-protein coupled receptor 10, hGR3, PRLHR, GPR10, GR3
Target/Specificity	KLH-conjugated synthetic peptide encompassing a sequence within the center region of human GPR10. The exact sequence is proprietary.
Dilution	WB~~ 1:1000
Format	Rabbit IgG in phosphate buffered saline , pH 7.4, 150mM NaCl, 0.09% (W/V) sodium azide and 50% glycerol
Storage	Store at -20 °C.Stable for 12 months from date of receipt

Protein Information

Name	PRLHR
Synonyms	GPR10, GR3
Function	Receptor for prolactin-releasing peptide (PrRP). Implicated in lactation, regulation of food intake and pain-signal processing.
Cellular Location	Cell membrane; Multi-pass membrane protein.
Tissue Location	Only detected in the pituitary gland and in all cell types of pituitary adenomas.

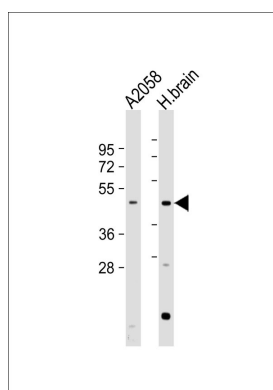
Background

Receptor for prolactin-releasing peptide (PrRP). Implicated in lactation, regulation of food intake and pain-signal processing.

References

Marchese A.,et al.Genomics 29:335-344(1995).
Hinuma S.,et al.Nature 393:272-276(1998).
Ozawa A.,et al.Mol. Endocrinol. 16:785-798(2002).
Deloukas P.,et al.Nature 429:375-381(2004).
Fujii R.,et al.Regul. Pept. 83:1-10(1999).

Images



All lanes : Anti-GPR10 Antibody at 1:1000 dilution Lane 1: A2058 whole cell lysate Lane 2: human brain lysate Lysates/proteins at 20 µg per lane. Secondary Goat Anti-Rabbit IgG, (H+L), Peroxidase conjugated at 1/10000 dilution. Predicted band size : 41 kDa Blocking/Dilution buffer: 5% NFDM/TBST.

Please note: All products are 'FOR RESEARCH USE ONLY. NOT FOR USE IN DIAGNOSTIC OR THERAPEUTIC PROCEDURES'.