

Myosin 14 Antibody

Purified Rabbit Polyclonal Antibody (Pab)

Catalog # AP53357

Product Information

Application	WB
Primary Accession	Q7Z406
Reactivity	Human
Host	Rabbit
Clonality	Polyclonal
Calculated MW	227871

Additional Information

Gene ID	79784
Other Names	Myosin-14, Myosin heavy chain 14, Myosin heavy chain, non-muscle IIc, Non-muscle myosin heavy chain IIc, NMHC II-C, MYH14, KIAA2034
Target/Specificity	KLH-conjugated synthetic peptide encompassing a sequence within the center region of human Myosin 14. The exact sequence is proprietary.
Dilution	WB~~ 1:1000
Format	Rabbit IgG in phosphate buffered saline , pH 7.4, 150mM NaCl, 0.09% (W/V) sodium azide and 50% glycerol
Storage	Store at -20 °C.Stable for 12 months from date of receipt

Protein Information

Name	MYH14
Synonyms	KIAA2034
Function	Cellular myosin that appears to play a role in cytokinesis, cell shape, and specialized functions such as secretion and capping.
Tissue Location	High levels of expression are found in brain (highest in corpus callosum), heart, kidney, liver, lung, small intestine, colon and skeletal muscle. Expression is low in organs composed mainly of smooth muscle, such as aorta, uterus and urinary bladder. No detectable expression is found in thymus, spleen, placenta and lymphocytes.

Background

Cellular myosin that appears to play a role in cytokinesis, cell shape, and specialized functions such as secretion and capping.

References

Leal A.,et al.Gene 312:165-171(2003).

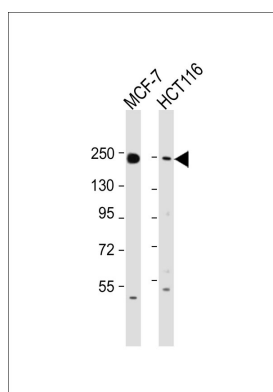
Nagase T.,et al.Submitted (JAN-2007) to the EMBL/GenBank/DDBJ databases.

Grimwood J.,et al.Nature 428:529-535(2004).

Bienvenut W.V.,et al.Submitted (NOV-2006) to UniProtKB.

Jana S.S.,et al.J. Biol. Chem. 284:11563-11571(2009).

Images



All lanes : Anti-Myosin 14 Antibody at 1:1000 dilution
Lane 1: MCF-7 whole cell lysate Lane 2: HCT116 whole cell lysate
Lysates/proteins at 20 µg per lane. Secondary Goat Anti-Rabbit IgG, (H+L), Peroxidase conjugated at 1/10000 dilution. Predicted band size : 228 kDa
Blocking/Dilution buffer: 5% NFDM/TBST.

Please note: All products are 'FOR RESEARCH USE ONLY. NOT FOR USE IN DIAGNOSTIC OR THERAPEUTIC PROCEDURES'.