

CNTROB Antibody

Purified Rabbit Polyclonal Antibody (Pab)

Catalog # AP53335

Product Information

Application	WB
Primary Accession	Q8N137
Reactivity	Human
Host	Rabbit
Clonality	Polyclonal
Calculated MW	101253

Additional Information

Gene ID	116840
Other Names	Centrobin, Centrosomal BRCA2-interacting protein, LYST-interacting protein 8, CNTROB, LIP8
Target/Specificity	KLH-conjugated synthetic peptide encompassing a sequence within the center region of human CNTROB. The exact sequence is proprietary.
Dilution	WB~~ 1:1000
Format	Rabbit IgG in phosphate buffered saline , pH 7.4, 150mM NaCl, 0.09% (W/V) sodium azide and 50% glycerol
Storage	Store at -20 °C.Stable for 12 months from date of receipt

Protein Information

Name	CNTROB
Synonyms	LIP8
Function	Required for centriole duplication. Inhibition of centriole duplication leading to defects in cytokinesis.
Cellular Location	Cytoplasm, cytoskeleton, microtubule organizing center, centrosome, centriole Note=Centriole-associated, asymmetrically localizes to the daughter centriole
Tissue Location	Widely expressed (at protein level). Highly expressed in testis. Also expressed in spleen, thymus, prostate, small intestine, colon and peripheral blood leukocytes

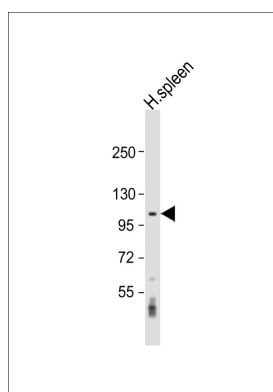
Background

Required for centriole duplication. Inhibition of centriole duplication leading to defects in cytokinesis.

References

Zou C.,et al.J. Cell Biol. 171:437-445(2005).
Wan D.,et al.Proc. Natl. Acad. Sci. U.S.A. 101:15724-15729(2004).
Bechtel S.,et al.BMC Genomics 8:399-399(2007).
Zody M.C.,et al.Nature 440:1045-1049(2006).
Ota T.,et al.Nat. Genet. 36:40-45(2004).

Images



Anti-CNTROB Antibody at 1:1000 dilution + human spleen lysate Lysates/proteins at 20 µg per lane. Secondary Goat Anti-Rabbit IgG, (H+L), Peroxidase conjugated at 1/10000 dilution. Predicted band size : 101 kDa Blocking/Dilution buffer: 5% NFDM/TBST.

Please note: All products are 'FOR RESEARCH USE ONLY. NOT FOR USE IN DIAGNOSTIC OR THERAPEUTIC PROCEDURES'.