

Cone Arrestin Antibody

Purified Rabbit Polyclonal Antibody (Pab)

Catalog # AP53331

Product Information

Application	WB
Primary Accession	P36575
Reactivity	Human
Host	Rabbit
Clonality	Polyclonal
Calculated MW	42778

Additional Information

Gene ID	407
Other Names	Arrestin-C, Cone arrestin, C-arrestin, cArr, Retinal cone arrestin-3, X-arrestin, ARR3, ARRX, CAR
Target/Specificity	KLH-conjugated synthetic peptide encompassing a sequence within the C-term region of human Cone Arrestin. The exact sequence is proprietary.
Dilution	WB~~ 1:1000
Format	Rabbit IgG in phosphate buffered saline , pH 7.4, 150mM NaCl, 0.09% (W/V) sodium azide and 50% glycerol
Storage	Store at -20 °C.Stable for 12 months from date of receipt

Protein Information

Name	ARR3
Synonyms	ARRX, CAR
Function	May play a role in an as yet undefined retina-specific signal transduction. Could bind to photoactivated-phosphorylated red/green opsins.
Cellular Location	Photoreceptor inner segment {ECO:0000250 UniProtKB:Q9EQP6}. Cell projection, cilium, photoreceptor outer segment {ECO:0000250 UniProtKB:Q9EQP6}
Tissue Location	Inner and outer segments, and the inner plexiform regions of the retina

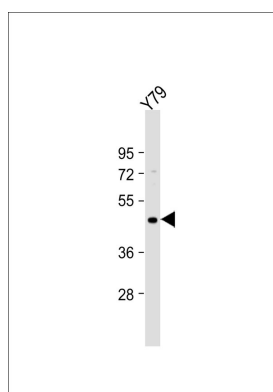
Background

May play a role in an as yet undefined retina-specific signal transduction. Could binds to photoactivated-phosphorylated red/green opsins.

References

Murakami A.,et al.FEBS Lett. 334:203-209(1993).
Craft C.M.,et al.J. Biol. Chem. 269:4613-4619(1994).
Craft C.M.,et al.Submitted (NOV-1998) to the EMBL/GenBank/DDBJ databases.
Sakuma H.,et al.FEBS Lett. 382:105-110(1996).
Sakuma H.,et al.Gene 224:87-95(1998).

Images



Anti-Cone Arrestin Antibody at 1:1000 dilution + Y79 whole cell lysate Lysates/proteins at 20 µg per lane. Secondary Goat Anti-Rabbit IgG, (H+L), Peroxidase conjugated at 1/10000 dilution. Predicted band size : 43 kDa Blocking/Dilution buffer: 5% NFDM/TBST.

Please note: All products are 'FOR RESEARCH USE ONLY. NOT FOR USE IN DIAGNOSTIC OR THERAPEUTIC PROCEDURES'.