

CD248 Antibody

Purified Rabbit Polyclonal Antibody (Pab)
Catalog # AP53290

Product Information

Application	WB
Primary Accession	Q9HCU0
Reactivity	Human
Host	Rabbit
Clonality	Polyclonal
Calculated MW	80859

Additional Information

Gene ID	57124
Other Names	Endosialin, Tumor endothelial marker 1, CD248, CD248, CD164L1, TEM1
Target/Specificity	KLH-conjugated synthetic peptide encompassing a sequence within the center region of human CD248. The exact sequence is proprietary.
Dilution	WB~~ 1:1000
Format	Rabbit IgG in phosphate buffered saline , pH 7.4, 150mM NaCl, 0.09% (W/V) sodium azide and 50% glycerol
Storage	Store at -20 °C.Stable for 12 months from date of receipt

Protein Information

Name	CD248
Synonyms	CD164L1, TEM1
Function	Cell surface glycoprotein involved in various biological processes including angiogenesis, immune response modulation, and tissue remodeling and repair. Participates in pericyte proliferation through positive modulation of the PDGF receptor signaling pathway (PubMed: 20484976). Acts as a scaffold for factor X, triggering allosteric changes and the spatial re-alignment of factor X with the TF-factor VIIa complex, thereby enhancing coagulation activation. Modulates the insulin signaling pathway by interacting with insulin receptor/INSR and by diminishing its capacity to be autophosphorylated in response to insulin. Also regulates LPS-induced inflammatory response in macrophages by favoring the production of proinflammatory cytokines. In human, negatively regulates T-cell proliferation compared with stromal cells where it increases proliferation (PubMed: 21466550).

Cellular Location

Membrane; Single-pass type I membrane protein

Tissue Location

Expressed in tumor endothelial cells but absent or barely detectable in normal endothelial cells. Expressed in metastatic lesions of the liver and during angiogenesis of corpus luteum formation and wound healing. Expressed in vascular endothelial cells of malignant tumors but not in normal blood vessels. Expressed in stromal fibroblasts. Strongly expressed in pericytes (PubMed:20484976) Expressed on stromal cells and cells with lymphoid morphology such a T- cells (PubMed:21466550).

Background

May play a role in tumor angiogenesis.

References

St Croix B.,et al.Science 289:1197-1202(2000).

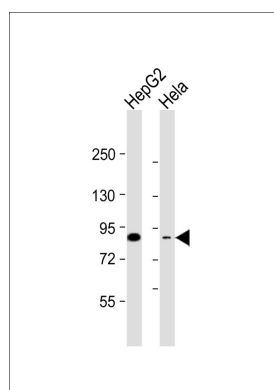
Christian S.,et al.J. Biol. Chem. 276:7408-7414(2001).

Ota T.,et al.Nat. Genet. 36:40-45(2004).

Rettig W.J.,et al.Proc. Natl. Acad. Sci. U.S.A. 89:10832-10836(1992).

Dolznig H.,et al.Cancer Immun. 5:10-10(2005).

Images



All lanes : Anti-CD248 Antibody at 1:1000 dilution Lane 1: HepG2 whole cell lysate Lane 2: HeLa whole cell lysate Lysates/proteins at 20 µg per lane. Secondary Goat Anti-Rabbit IgG, (H+L), Peroxidase conjugated at 1/10000 dilution. Predicted band size : 81 kDa Blocking/Dilution buffer: 5% NFDM/TBST.

Please note: All products are 'FOR RESEARCH USE ONLY. NOT FOR USE IN DIAGNOSTIC OR THERAPEUTIC PROCEDURES'.