

# Rabbit IgG Antibody

Purified Mouse Monoclonal Antibody (Mab)  
Catalog # AP52845

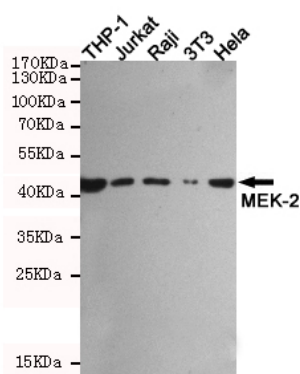
## Product Information

<b>Application</b>	WB, E
<b>Reactivity</b>	Rabbit
<b>Host</b>	Mouse
<b>Clonality</b>	Monoclonal
<b>Isotype</b>	IgG1
<b>Conjugate</b>	Unconjugated
<b>Immunogen</b>	Rabbit IgG
<b>Purification</b>	Affinity Purified
<b>Calculated MW</b>	55 KDa

## Additional Information

<b>Other Names</b>	Antibody; Ig gamma chain C region; Ig kappa-b4 chain C region; Ig kappa-b5 chain C region; Ig kappa-b9 chain C region; Ig lambda chain C region; K-BAS.
<b>Dilution</b>	WB~~1:50000 E~~N/A
<b>Format</b>	Liquid in PBS containing 50% glycerol, 0.5% BSA and 0.02% sodium azide, pH 7.3.
<b>Storage</b>	Store at 4°C short term. Aliquot and store at -20°C long term. Avoid freeze/thaw cycles.

## Images



Western blot detection of MEK-2 in THP-1, Jurkat, Raji, 3T3 and HeLa cell lysates using 310001 (MEK-2 rabbit pAb, 1:1000 diluted), then incubated with 201069 (Rabbit IgG mAb, 1:50000 diluted). Anti-mouse IgG, HRP-linked Antibody was used for detecting. Predicted band size: 44KDa. Observed band size: 44KDa.

## Citations

- [Autophagy contributes to angiotensin II induced dysfunction of HUVECs](#)

Please note: All products are 'FOR RESEARCH USE ONLY. NOT FOR USE IN DIAGNOSTIC OR THERAPEUTIC PROCEDURES'.