

beta Tubulin Antibody

Purified Mouse Monoclonal Antibody (Mab)

Catalog # AP52742

Product Information

Application	WB, IF, ICC
Primary Accession	P07437
Reactivity	Rat, Human, Mouse, Hamster, Monkey, Goat
Host	Mouse
Clonality	Monoclonal
Isotype	IgG1
Conjugate	Unconjugated
Immunogen	Purified recombinant human Tubulin beta protein fragments expressed in E.coli.
Purification	Affinity Purified
Calculated MW	49671

Additional Information

Gene ID	203068
Other Names	beta 4 tubulin;Beta 5 tubulin;beta 1b tubulin;M40;TUBB1;TUBB5;tubulin beta 1 chain; Tubulin beta 4 chain;tubulin beta 5 chain;Tubulin beta;Tubulin beta chain;tubulin beta polypeptide.
Dilution	WB~~1:5000 IF~~1:50~200 ICC~~1:500
Format	Liquid in PBS containing 50% glycerol, 0.5% BSA and 0.02% sodium azide, pH 7.3.
Storage	Store at 4°C short term. Aliquot and store at -20°C long term. Avoid freeze/thaw cycles.

Protein Information

Name	TUBB
Synonyms	TUBB5
Function	Tubulin is the major constituent of microtubules, a cylinder consisting of laterally associated linear protofilaments composed of alpha- and beta-tubulin heterodimers. Microtubules grow by the addition of GTP-tubulin dimers to the microtubule end, where a stabilizing cap forms. Below the cap, tubulin dimers are in GDP-bound state, owing to GTPase activity of alpha-tubulin.

Cellular Location	Cytoplasm, cytoskeleton
Tissue Location	Ubiquitously expressed with highest levels in spleen, thymus and immature brain.

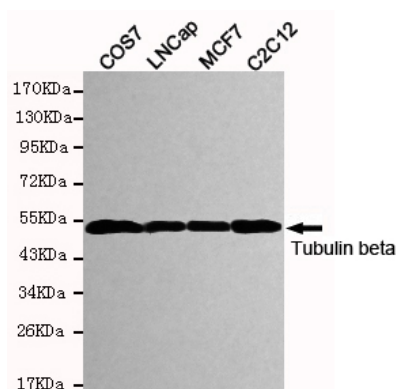
Background

Tubulin is the major constituent of microtubules. It binds two moles of GTP, one at an exchangeable site on the beta chain and one at a non-exchangeable site on the alpha chain.

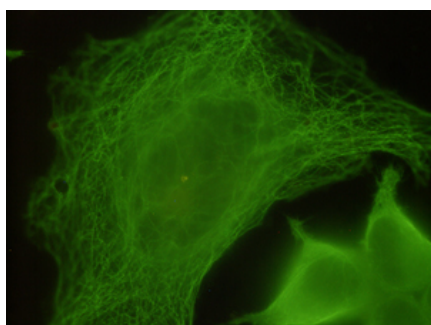
References

Lee M.G.-S.,et al.Cell 33:477-487(1983).
Hall J.L.,et al.Mol. Cell. Biol. 3:854-862(1983).
Crabtree D.V.,et al.Bioorg. Med. Chem. 9:1967-1976(2001).
Yu W.,et al.Submitted (JUN-1998) to the EMBL/GenBank/DDBJ databases.
Shiina S.,et al.Submitted (SEP-1999) to the EMBL/GenBank/DDBJ databases.

Images



Western blot detection of Tubulin beta in COS7,LNCap,MCF7 and C2C12 cell lysates and using Tubulin beta mouse mAb (1:5000 diluted).Predicted band size: 55KDa.Observed band size: 55KDa.



Immunocytochemistry staining of HeLa cells fixed with 4% paraformaldehyde and using anti-Tubulin beta mouse mAb (dilution 1:500).

Please note: All products are 'FOR RESEARCH USE ONLY. NOT FOR USE IN DIAGNOSTIC OR THERAPEUTIC PROCEDURES'.