

# Mannose Phosphate Isomerase Antibody

Purified Mouse Monoclonal Antibody (Mab)

Catalog # AP52673

## Product Information

---

<b>Application</b>	WB, ICC
<b>Primary Accession</b>	<a href="#">P34949</a>
<b>Reactivity</b>	Human
<b>Host</b>	Mouse
<b>Clonality</b>	Monoclonal
<b>Isotype</b>	IgG1
<b>Calculated MW</b>	46656

## Additional Information

---

<b>Gene ID</b>	4351
<b>Other Names</b>	PMI1;CDG1B;FLJ39201;Mannose 6 phosphate isomerase;Mannose-6-phosphate isomerase; MANNOSEPHOSPHATE ISOMERASE;MGC94106;MPI;MPI_HUMAN;Phosphohexomutase;phosphomannose isomerase 1;Phosphomannose isomerase;PMI;PMI1.
<b>Dilution</b>	WB~~1:1000 ICC~~1:300
<b>Format</b>	Liquid in PBS containing 50% glycerol, 0.5% BSA and 0.02% sodium azide, pH 7.3.
<b>Storage</b>	Store at 4°C short term. Aliquot and store at -20°C long term. Avoid freeze/thaw cycles.

## Protein Information

---

<b>Name</b>	MPI ( <a href="#">HGNC:7216</a> )
<b>Synonyms</b>	PMI1
<b>Function</b>	Isomerase that catalyzes the interconversion of fructose-6-P and mannose-6-P and has a critical role in the supply of D-mannose derivatives required for many eukaryotic glycosylation reactions.
<b>Cellular Location</b>	Cytoplasm {ECO:0000250   UniProtKB:Q924M7}.
<b>Tissue Location</b>	Expressed in all tissues, but more abundant in heart, brain and skeletal muscle.

## Background

---

Involved in the synthesis of the GDP-mannose and dolichol-phosphate-mannose required for a number of critical mannosyl transfer reactions.

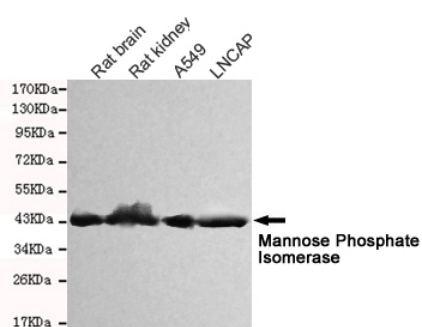
## References

---

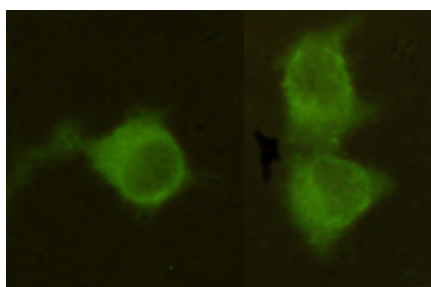
Proudfoot A.E.I.,et al.Eur. J. Biochem. 219:415-423(1994).  
Schollen E.,et al.Hum. Mutat. 16:247-252(2000).  
Ota T.,et al.Nat. Genet. 36:40-45(2004).  
Mural R.J.,et al.Submitted (SEP-2005) to the EMBL/GenBank/DDBJ databases.  
Gauci S.,et al.Anal. Chem. 81:4493-4501(2009).

## Images

---



Western blot detection of Mannose Phosphate Isomerase in Rat kidney,Rat brain,A549 and Lncap cell lysates and using Mannose Phosphate Isomerase mouse mAb (1:1000 diluted).Predicted band size: 54KDa.Observed band size: 45KDa.



Immunocytochemistry stain of HeLa using Mannose Phosphate Isomerase mouse mAb (1:300).

Please note: All products are 'FOR RESEARCH USE ONLY. NOT FOR USE IN DIAGNOSTIC OR THERAPEUTIC PROCEDURES'.