

RSPO2 Antibody (C-term)

Affinity Purified Rabbit Polyclonal Antibody (Pab)

Catalog # AP5264b

Product Information

Application	WB, IHC-P, FC, E
Primary Accession	Q6UXX9
Other Accession	Q8BFU0
Reactivity	Human, Rat, Mouse
Predicted	Mouse
Host	Rabbit
Clonality	Polyclonal
Isotype	Rabbit IgG
Clone Names	RB26400
Calculated MW	28315
Antigen Region	190-218

Additional Information

Gene ID	340419
Other Names	R-spondin-2, Roof plate-specific spondin-2, hRspo2, RSPO2
Target/Specificity	This RSPO2 antibody is generated from rabbits immunized with a KLH conjugated synthetic peptide between 190-218 amino acids from the C-terminal region of human RSPO2.
Dilution	WB~~1 : 1000 IHC-P~~1:100~500 FC~~1:10~50 E~~Use at an assay dependent concentration.
Format	Purified polyclonal antibody supplied in PBS with 0.05% (V/V) Proclin 300. This antibody is purified through a protein A column, followed by peptide affinity purification.
Storage	Maintain refrigerated at 2-8°C for up to 2 weeks. For long term storage store at -20°C in small aliquots to prevent freeze-thaw cycles.
Precautions	RSPO2 Antibody (C-term) is for research use only and not for use in diagnostic or therapeutic procedures.

Protein Information

Name	RSPO2
Function	Activator of the canonical Wnt signaling pathway by acting as a ligand for LGR4-6 receptors. Upon binding to LGR4-6 (LGR4, LGR5 or LGR6), LGR4-6

associate with phosphorylated LRP6 and frizzled receptors that are activated by extracellular Wnt receptors, triggering the canonical Wnt signaling pathway to increase expression of target genes. Also regulates the canonical Wnt/beta-catenin-dependent pathway and non-canonical Wnt signaling by acting as an inhibitor of ZNRF3, an important regulator of the Wnt signaling pathway (PubMed:[21727895](#), PubMed:[21909076](#), PubMed:[22615920](#)). During embryonic development, plays a crucial role in limb specification, amplifying the Wnt signaling pathway independently of LGR4-6 receptors, possibly by acting as a direct antagonistic ligand to RNF43 and ZNRF3, hence governing the number of limbs an embryo should form (PubMed:[29769720](#)).

Cellular Location Secreted {ECO:0000250|UniProtKB:Q8BFU0}.

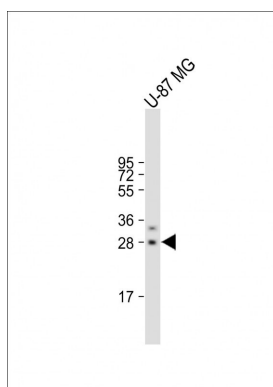
Background

R-spondins (RSPOs), such as RSPO2, are secreted proteins that regulate beta-catenin (CTNNB1; MIM 116806) signaling.

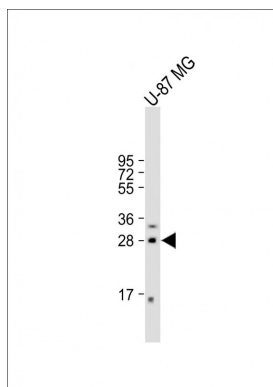
References

Kim, K.A., et al. Cell Cycle 5(1):23-26(2006)
 Kazanskaya, O., et al. Dev. Cell 7(4):525-534(2004)
 Clark, H.F., et al. Genome Res. 13(10):2265-2270(2003)

Images

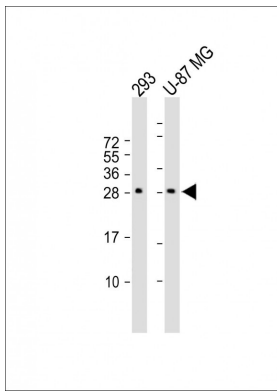


All lanes : Anti-RSPO2 Antibody (C-term) at 1:1000 dilution
 Lane 1: U-87 MG whole cell lysate Lysates/proteins at 20 µg per lane. Secondary Goat Anti-Rabbit IgG, (H+L), Peroxidase conjugated at 1/10000 dilution. Predicted band size : 28 kDa Blocking/Dilution buffer: 5% NFDM/TBST.

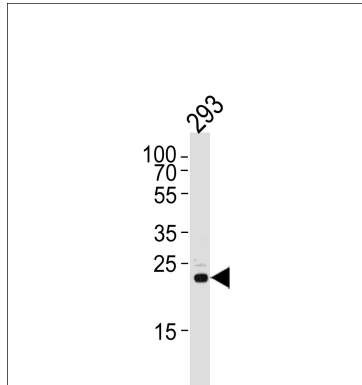


All lanes : Anti-RSPO2 Antibody (C-term) at 1:500 dilution
 Lane 1: U-87 MG whole cell lysate Lysates/proteins at 20 µg per lane. Secondary Goat Anti-Rabbit IgG, (H+L), Peroxidase conjugated at 1/10000 dilution. Predicted band size : 28 kDa Blocking/Dilution buffer: 5% NFDM/TBST.

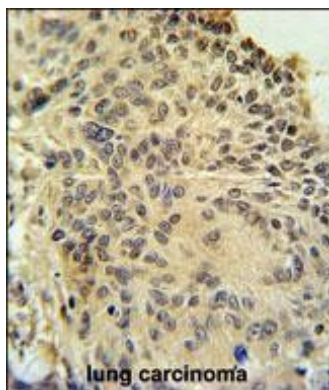
All lanes : Anti-RSPO2 Antibody (C-term) at 1:500 dilution
 Lane 1: 293 whole cell lysate Lane 2: U-87 MG whole cell lysate Lysates/proteins at 20 µg per lane. Secondary Goat Anti-Rabbit IgG, (H+L), Peroxidase conjugated at 1/10000 dilution. Predicted band size : 28 kDa Blocking/Dilution



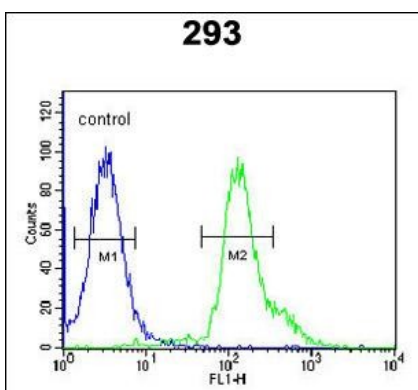
buffer: 5% NFDM/TBST.



Western blot analysis of lysate from 293 cell line, using RSPO2 Antibody (C-term)(Cat. #AP5264b). AP5264b was diluted at 1:1000 at each lane. A goat anti-rabbit IgG H&L(HRP) at 1:5000 dilution was used as the secondary antibody. Lysate at 35ug per lane.

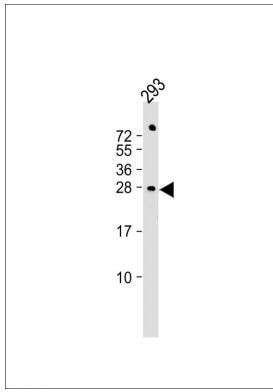


RSPO2 Antibody (C-term) (Cat. #AP5264b) immunohistochemistry analysis in formalin fixed and paraffin embedded human lung carcinoma followed by peroxidase conjugation of the secondary antibody and DAB staining. This data demonstrates the use of the RSPO2 Antibody (C-term) for immunohistochemistry. Clinical relevance has not been evaluated.



RSPO2 Antibody (C-term) (Cat. #AP5264b) flow cytometric analysis of 293 cells (right histogram) compared to a negative control cell (left histogram). FITC-conjugated goat-anti-rabbit secondary antibodies were used for the analysis.

All lanes : Anti-RSPO2 Antibody (C-term) at 1:1000 dilution
Lane 1: 293 whole cell lysate Lysates/proteins at 20 μ g per lane. Secondary Goat Anti-Rabbit IgG, (H+L), Peroxidase conjugated at 1/10000 dilution. Predicted band size :28 kDa Blocking/Dilution buffer: 5% NFDM/TBST.



Please note: All products are 'FOR RESEARCH USE ONLY. NOT FOR USE IN DIAGNOSTIC OR THERAPEUTIC PROCEDURES'.