

K0415 Antibody (Center)

Affinity Purified Rabbit Polyclonal Antibody (Pab)

Catalog # AP5236c

Product Information

Application	IHC-P, E
Primary Accession	O43299
Other Accession	Q3U829
Reactivity	Human
Predicted	Mouse
Host	Rabbit
Clonality	Polyclonal
Isotype	Rabbit IgG
Clone Names	RB26367
Calculated MW	88605
Antigen Region	294-322

Additional Information

Gene ID	9907
Other Names	AP-5 complex subunit zeta-1, Adaptor-related protein complex 5 zeta subunit, Zeta5, AP5Z1, KIAA0415, SPG48
Target/Specificity	This K0415 antibody is generated from rabbits immunized with a KLH conjugated synthetic peptide between 294-322 amino acids from the Central region of human K0415.
Dilution	IHC-P~~1:100~500 E~~Use at an assay dependent concentration.
Format	Purified polyclonal antibody supplied in PBS with 0.09% (W/V) sodium azide. This antibody is purified through a protein A column, followed by peptide affinity purification.
Storage	Maintain refrigerated at 2-8°C for up to 2 weeks. For long term storage store at -20°C in small aliquots to prevent freeze-thaw cycles.
Precautions	K0415 Antibody (Center) is for research use only and not for use in diagnostic or therapeutic procedures.

Protein Information

Name	AP5Z1
Synonyms	KIAA0415, SPG48

Function	As part of AP-5, a probable fifth adaptor protein complex it may be involved in endosomal transport. According to PubMed: 20613862 it is a putative helicase required for efficient homologous recombination DNA double-strand break repair.
Cellular Location	Cytoplasm. Nucleus. Note=By SDS-PAGE, 2 isoforms have been observed, the shorter seems to be predominantly nuclear and the longer is mostly cytoplasmic.

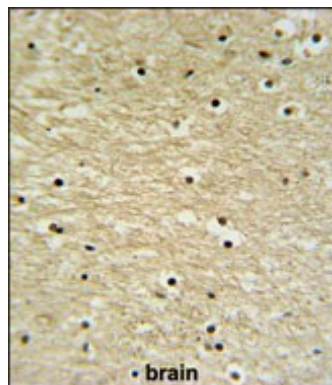
Background

The function of this protein has not been specifically defined.

References

Hillier, L.W., et al. Nature 424(6945):157-164(2003)
Scherer, S.W., et al. Science 300(5620):767-772(2003)

Images



K0415 Antibody (Center) (Cat. #AP5236c) IHC analysis in formalin fixed and paraffin embedded human brain tissue followed by peroxidase conjugation of the secondary antibody and DAB staining. This data demonstrates the use of the K0415 Antibody (Center) for immunohistochemistry. Clinical relevance has not been evaluated.

Please note: All products are 'FOR RESEARCH USE ONLY. NOT FOR USE IN DIAGNOSTIC OR THERAPEUTIC PROCEDURES'.