

# CXorf56 Antibody (N-term)

Affinity Purified Rabbit Polyclonal Antibody (Pab)

Catalog # AP5213a

## Product Information

---

<b>Application</b>	WB, FC, E
<b>Primary Accession</b>	<a href="#">Q9H5V9</a>
<b>Other Accession</b>	<a href="#">Q8VDP2</a>
<b>Reactivity</b>	Human
<b>Predicted</b>	Mouse
<b>Host</b>	Rabbit
<b>Clonality</b>	Polyclonal
<b>Isotype</b>	Rabbit IgG
<b>Clone Names</b>	RB26682
<b>Calculated MW</b>	25625
<b>Antigen Region</b>	38-67

## Additional Information

---

<b>Gene ID</b>	63932
<b>Other Names</b>	UPF0428 protein CXorf56, CXorf56
<b>Target/Specificity</b>	This CXorf56 antibody is generated from rabbits immunized with a KLH conjugated synthetic peptide between 38-67 amino acids from the N-terminal region of human CXorf56.
<b>Dilution</b>	WB~~1:1000 FC~~1:10~50 E~~Use at an assay dependent concentration.
<b>Format</b>	Purified polyclonal antibody supplied in PBS with 0.09% (W/V) sodium azide. This antibody is purified through a protein A column, followed by peptide affinity purification.
<b>Storage</b>	Maintain refrigerated at 2-8°C for up to 2 weeks. For long term storage store at -20°C in small aliquots to prevent freeze-thaw cycles.
<b>Precautions</b>	CXorf56 Antibody (N-term) is for research use only and not for use in diagnostic or therapeutic procedures.

## Protein Information

---

<b>Name</b>	STEEP1 ( <a href="#">HGNC:26239</a> )
<b>Function</b>	Molecular adapter that stimulates membrane curvature formation and subsequent endoplasmic reticulum exit site (ERES) establishment by recruiting PI3K complex I, leading to COPII vesicle- mediated transport

(PubMed:[32690950](#)). Promotes endoplasmic reticulum (ER) exit of cGAMP-activated STING1 oligomers (PubMed:[32690950](#), PubMed:[37832545](#)).

## Cellular Location

Cytoplasm. Endoplasmic reticulum membrane; Peripheral membrane protein; Cytoplasmic side. Nucleus Note=Recruited to the endoplasmic reticulum following interaction with phosphorylated STING1.

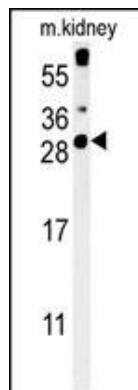
## Background

While this protein is well-supported by transcript data, no functional information on its protein products is currently available.

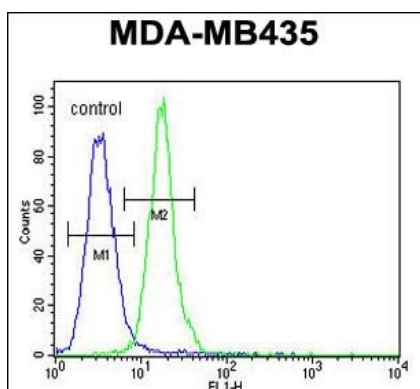
## References

Tarpey, P.S., et al. Nat. Genet. 41(5):535-543(2009)  
Ewing, R.M., et al. Mol. Syst. Biol. 3, 89 (2007)

## Images



CXorf56 Antibody (N-term) (Cat. #AP5213a) western blot analysis in mouse kidney tissue lysates (35ug/lane). This demonstrates the CXorf56 antibody detected CXorf56 protein (arrow).



CXorf56 Antibody (N-term) (Cat. #AP5213a) flow cytometric analysis of MDA-MB435 cells (right histogram) compared to a negative control cell (left histogram). FITC-conjugated goat-anti-rabbit secondary antibodies were used for the analysis.

## Citations

- [CXorf56, a dendritic neuronal protein, identified as a new candidate gene for X-linked intellectual disability.](#)

Please note: All products are 'FOR RESEARCH USE ONLY. NOT FOR USE IN DIAGNOSTIC OR THERAPEUTIC PROCEDURES'.