

# ICAM1 Rabbit pAb

ICAM1 Rabbit pAb  
Catalog # AP52125

## Product Information

---

<b>Application</b>	WB, IHC-P, IHC-F, IF
<b>Primary Accession</b>	<a href="#">P05362</a>
<b>Reactivity</b>	Human
<b>Host</b>	Rabbit
<b>Clonality</b>	Polyclonal
<b>Calculated MW</b>	57825
<b>Physical State</b>	Liquid
<b>Immunogen</b>	KLH conjugated synthetic peptide derived from human CD54
<b>Epitope Specificity</b>	201-300/537
<b>Isotype</b>	IgG
<b>Purity</b>	affinity purified by Protein A
<b>Buffer</b>	0.01M TBS (pH7.4) with 1% BSA, 0.02% Proclin300 and 50% Glycerol.
<b>SUBCELLULAR LOCATION</b>	Membrane; Single-pass type I membrane protein.
<b>SIMILARITY</b>	Belongs to the immunoglobulin superfamily. ICAM family. contains 5 Ig-like C2-type (immunoglobulin-like) domains.
<b>SUBUNIT</b>	Homodimer (Probable). Interacts with human herpesvirus 8 MIR2 protein (Probable). Interacts with MUC1 and promotes cell aggregation in epithelial cells. Interacts with ARHGEF26/SGEF. Binds to coxsackievirus A21 capsid proteins and acts as a receptor for this virus.
<b>Post-translational modifications</b>	Monoubiquitinated, which is promoted by MARCH9 and leads to endocytosis.
<b>Important Note</b>	This product as supplied is intended for research use only, not for use in human, therapeutic or diagnostic applications.
<b>Background Descriptions</b>	This gene encodes a cell surface glycoprotein which is typically expressed on endothelial cells and cells of the immune system. It binds to integrins of type CD11a / CD18, or CD11b / CD18 and is also exploited by Rhinovirus as a receptor. [provided by RefSeq, Jul 2008].

## Additional Information

---

<b>Gene ID</b>	3383
<b>Other Names</b>	Intercellular adhesion molecule 1, ICAM-1, Major group rhinovirus receptor, CD54, ICAM1
<b>Dilution</b>	IHC-P=1:100-500,IHC-F=1:100-500,IF=1:100-500,WB=1:500-2000
<b>Storage</b>	Store at -20 °C for one year. Avoid repeated freeze/thaw cycles. When reconstituted in sterile pH 7.4 0.01M PBS or diluent of antibody the antibody is stable for at least two weeks at 2-4 °C.

## Protein Information

Name	ICAM1 ( <a href="#">HGNC:5344</a> )
Function	Cell adhesion molecule that functions as a receptor ligand of the signaling receptor ITGAL:ITGB2/LFA-1 (lymphocyte-function associated (LFA) molecule 1) ensuring leukocyte cell-cell adhesion, by providing a calibrated system to namely adjust T-cell killing to the antigen stimulation strength (PubMed: <a href="#">3086451</a> , PubMed: <a href="#">3340213</a> , PubMed: <a href="#">38195629</a> ). Also functions as a ligand receptor of the signaling receptor ITGAM:ITGB2/MAC-1 ensuring adhesion between stimulated neutrophils and stimulated endothelial cells (PubMed: <a href="#">1980124</a> ). During leukocyte trans-endothelial migration, ICAM1 engagement promotes the assembly of endothelial apical cups through ARHGEF26/SGEF and RHOG activation (PubMed: <a href="#">17875742</a> ). Promotes cell aggregation in epithelial cells through interaction with MUC1 (PubMed: <a href="#">11173916</a> ).
Cellular Location	Cell membrane; Single-pass type I membrane protein
Tissue Location	Expressed on non-hematopoietic cells such as vascular endothelial cells, thymic epithelial cells, certain other epithelial cells, and fibroblasts, and on hematopoietic cells such as tissue macrophages, mitogen-stimulated T lymphocyte blasts, and germinal center dendritic cells in tonsils, lymph nodes, and Peyer's patches (PubMed:3086451). Expressed in low amounts on peripheral blood leukocytes (PubMed:3086451).

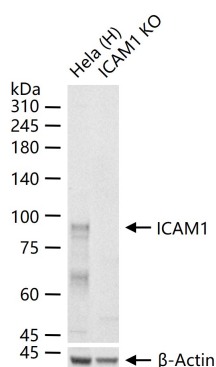
## Background

This gene encodes a cell surface glycoprotein which is typically expressed on endothelial cells and cells of the immune system. It binds to integrins of type CD11a / CD18, or CD11b / CD18 and is also exploited by Rhinovirus as a receptor. [provided by RefSeq, Jul 2008].

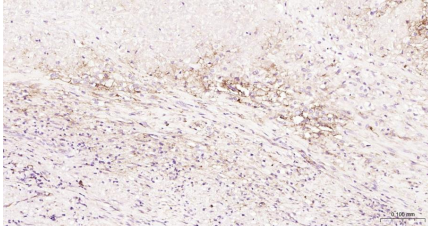
## References

Horley K.J.,et al.EMBO J. 8:2889-2896(1989).  
Takei F.,et al.Submitted (APR-1990) to the EMBL/GenBank/DDBJ databases.  
Siu G.,et al.J. Immunol. 143:3813-3820(1989).  
Ballantyne C.M.,et al.Nucleic Acids Res. 17:5853-5853(1989).  
Ballantyne C.M.,et al.Genomics 14:1076-1080(1992).

## Images



25 ug total protein per lane of various lysates (see on figure) probed with ICAM1 polyclonal antibody, unconjugated (AP52125) at 1:1000 dilution and 4°C overnight incubation. Followed by conjugated secondary antibody incubation at r.t. for 60 min.



Paraformaldehyde-fixed, paraffin embedded Human Prostate Tumor; Antigen retrieval by boiling in sodium citrate buffer (pH6.0) for 15 min; Antibody incubation with ICAM1 Polyclonal Antibody, Unconjugated (AP52125) at 1:200 overnight at 4°C, followed by conjugation to the AP52125-HRP and DAB (C-0010) staining.

Please note: All products are 'FOR RESEARCH USE ONLY. NOT FOR USE IN DIAGNOSTIC OR THERAPEUTIC PROCEDURES'.