

Inhibin beta A Antibody

Purified Rabbit Polyclonal Antibody (Pab)

Catalog # AP51977

Product Information

Application	WB
Primary Accession	P08476
Reactivity	Human, Mouse, Rat
Host	Rabbit
Clonality	Polyclonal
Calculated MW	47442

Additional Information

Gene ID	3624
Other Names	Inhibin beta A chain, Activin beta-A chain, Erythroid differentiation protein, EDF, INHBA
Target/Specificity	KLH-conjugated synthetic peptide encompassing a sequence within the center region of human Inhibin beta A. The exact sequence is proprietary.
Dilution	WB~~ 1:1000
Format	0.01M PBS, pH 7.2, 0.09% (W/V) Sodium azide, Glycerol 50%
Storage	Store at -20 °C. Stable for 12 months from date of receipt

Protein Information

Name	INHBA
Function	Inhibins/activins are involved in regulating a number of diverse functions such as hypothalamic and pituitary hormone secretion, gonadal hormone secretion, germ cell development and maturation, erythroid differentiation, insulin secretion, nerve cell survival, embryonic axial development or bone growth, depending on their subunit composition.
Cellular Location	Secreted.

Background

Inhibins and activins inhibit and activate, respectively, the secretion of follitropin by the pituitary gland. Inhibins/activins are involved in regulating a number of diverse functions such as hypothalamic and pituitary hormone secretion, gonadal hormone secretion, germ cell development and maturation, erythroid

differentiation, insulin secretion, nerve cell survival, embryonic axial development or bone growth, depending on their subunit composition. Inhibins appear to oppose the functions of activins.

References

Mason A.J.,et al.Biochem. Biophys. Res. Commun. 135:957-964(1986).

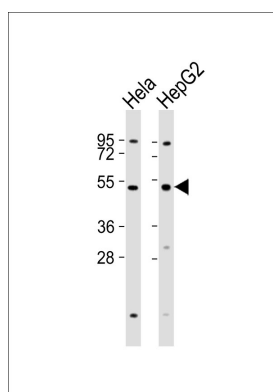
Murata M.,et al.Proc. Natl. Acad. Sci. U.S.A. 85:2434-2438(1988).

Tanimoto K.,et al.DNA Seq. 2:103-110(1991).

Hillier L.W.,et al.Nature 424:157-164(2003).

Stewart A.G.,et al.FEBS Lett. 206:329-334(1986).

Images



All lanes : Anti-Inhibin beta A Antibody at 1:1000 dilution
Lane 1: HeLa whole cell lysates Lane 2: HepG2 whole cell lysates
Lysates/proteins at 20 µg per lane. Secondary Goat Anti-Rabbit IgG, (H+L), Peroxidase conjugated at 1/10000 dilution Predicted band size : 47 kDa
Blocking/Dilution buffer: 5% NFD/MTBST.

Please note: All products are 'FOR RESEARCH USE ONLY. NOT FOR USE IN DIAGNOSTIC OR THERAPEUTIC PROCEDURES'.