

RPL10 Antibody

Purified Rabbit Polyclonal Antibody (Pab)
Catalog # AP51674

Product Information

Application	WB
Primary Accession	P27635
Reactivity	Human, Mouse, Rat
Host	Rabbit
Clonality	Polyclonal
Calculated MW	24 kDa

Additional Information

Other Names	60S ribosomal protein L10, Laminin receptor homolog, Protein QM, Tumor suppressor QM, RPL10, DXS648E, QM
Target/Specificity	KLH-conjugated synthetic peptide encompassing a sequence within the center region of human RPL10. The exact sequence is proprietary.
Dilution	WB~~ 1:1000
Format	0.01M PBS, pH 7.2, 0.09% (W/V) Sodium azide, Glycerol 50%
Storage	Store at -20 °C. Stable for 12 months from date of receipt

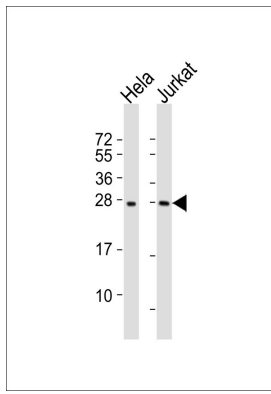
Protein Information

References

Dowdy S.F., et al. Nucleic Acids Res. 19:5763-5769(1991).
van den Ouweland A.M.W., et al. Hum. Mol. Genet. 1:269-273(1992).
Kroepelin M., et al. Submitted (AUG-1991) to the EMBL/GenBank/DDBJ databases.
Kaneko K., et al. Hum. Mol. Genet. 1:529-533(1992).
Oh H.S., et al. J. Biol. Chem. 277:36489-36498(2002).

Images

All lanes : Anti-RPL10 Antibody at 1:1000 dilution Lane 1:
Hela whole cell lysates Lane 2: Jurkat whole cell lysates
Lysates/proteins at 20 µg per lane. Secondary Goat
Anti-Rabbit IgG, (H+L), Peroxidase conjugated at 1/10000



dilution Predicted band size : 25 kDa Blocking/Dilution
buffer: 5% NFDM/TBST.

Please note: All products are 'FOR RESEARCH USE ONLY. NOT FOR USE IN DIAGNOSTIC OR THERAPEUTIC PROCEDURES'.